

**Anti-NOLC1 Antibody**  
Rabbit polyclonal antibody to NOLC1  
Catalog # AP59773

## Specification

---

### Anti-NOLC1 Antibody - Product Information

Application	WB
Primary Accession	<a href="#">Q14978</a>
Reactivity	Human, Mouse, Rat, Bovine
Host	Rabbit
Clonality	Polyclonal
Calculated MW	73603

### Anti-NOLC1 Antibody - Additional Information

Gene ID 9221

#### Other Names

KIAA0035; NS5ATP13; Nucleolar and coiled-body phosphoprotein 1; 140 kDa nucleolar phosphoprotein; Nopp140; Hepatitis C virus NS5A-transactivated protein 13; HCV NS5A-transactivated protein 13; Nucleolar 130 kDa protein; Nucleolar phosphoprotein p130

#### Target/Specificity

Recognizes endogenous levels of NOLC1 protein.

#### Dilution

WB~~WB (1/500 - 1/1000)

#### Format

Liquid in 0.42% Potassium phosphate, 0.87% Sodium chloride, pH 7.3, 30% glycerol, and 0.09% (W/V) sodium azide.

#### Storage

Store at -20 °C. Stable for 12 months from date of receipt

### Anti-NOLC1 Antibody - Protein Information

Name NOLC1 ([HGNC:15608](#))

#### Function

Nucleolar protein that acts as a regulator of RNA polymerase I by connecting RNA polymerase I with enzymes responsible for ribosomal processing and modification (PubMed: [10567578](http://www.uniprot.org/citations/10567578), PubMed: [26399832](http://www.uniprot.org/citations/26399832)). Required for neural crest specification: following monoubiquitination by the BCR(KBTBD8) complex, associates with TCOF1 and acts as a platform to connect RNA polymerase I with enzymes responsible for ribosomal processing and modification, leading to remodel the translational program of differentiating cells in favor of neural crest specification (PubMed:

[26399832](http://www.uniprot.org/citations/26399832)). Involved in nucleogenesis, possibly by playing a role in the maintenance of the fundamental structure of the fibrillar center and dense fibrillar component in the nucleolus (PubMed:[9016786](http://www.uniprot.org/citations/9016786)). It has intrinsic GTPase and ATPase activities (PubMed:[9016786](http://www.uniprot.org/citations/9016786)).

#### Cellular Location

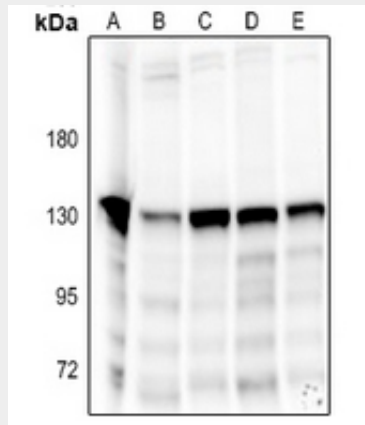
Nucleus, nucleolus. Cytoplasm. Note=Shuttles between the nucleolus and the cytoplasm. At telophase it begins to assemble into granular-like pre-nucleolar bodies which are subsequently relocated to nucleoli at the early G1-phase.

#### Anti-NOLC1 Antibody - Protocols

Provided below are standard protocols that you may find useful for product applications.

- [Western Blot](#)
- [Blocking Peptides](#)
- [Dot Blot](#)
- [Immunohistochemistry](#)
- [Immunofluorescence](#)
- [Immunoprecipitation](#)
- [Flow Cytometry](#)
- [Cell Culture](#)

#### Anti-NOLC1 Antibody - Images



Western blot analysis of NOLC1 expression in CT26 (A), C6 (B), A549 (C), Panc1 (D), SGC7901 (E) whole cell lysates.

#### Anti-NOLC1 Antibody - Background

KLH-conjugated synthetic peptide encompassing a sequence within the C-term region of human NOLC1. The exact sequence is proprietary.