

Anti-CD32c Antibody
Rabbit polyclonal antibody to CD32c
Catalog # AP59767**Specification**

Anti-CD32c Antibody - Product Information

Application	WB
Primary Accession	P31995
Reactivity	Human, Mouse, Rat
Host	Rabbit
Clonality	Polyclonal
Calculated MW	35578

Anti-CD32c Antibody - Additional Information**Gene ID** 9103**Other Names**

CD32; FCG2; IGFR2; Low affinity immunoglobulin gamma Fc region receptor II-c; IgG Fc receptor II-c; CDw32; Fc-gamma RII-c; Fc-gamma-RIIc; FcRII-c; CD32

Target/Specificity

Recognizes endogenous levels of CD32c protein.

Dilution

WB~~WB (1/500 - 1/1000)

Format

Liquid in 0.42% Potassium phosphate, 0.87% Sodium chloride, pH 7.3, 30% glycerol, and 0.09% (W/V) sodium azide.

Storage

Store at -20 °C. Stable for 12 months from date of receipt

Anti-CD32c Antibody - Protein Information**Name** FCGR2C**Synonyms** CD32, FCG2, IGFR2**Function**

Receptor for the Fc region of complexed immunoglobulins gamma. Low affinity receptor. Involved in a variety of effector and regulatory functions such as phagocytosis of immune complexes and modulation of antibody production by B-cells.

Cellular Location

[Isoform IIC4]: Cytoplasm. [Isoform IIC2]: Cell membrane; Single-pass type I membrane protein

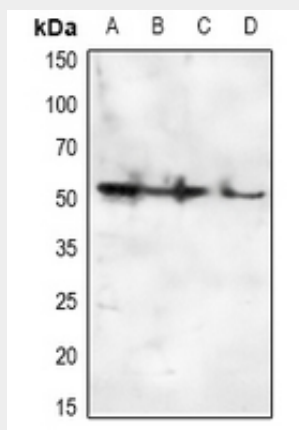
Tissue Location

Isoform IIC1 is detected in monocytes, macrophages, polymorphonuclear cells and natural killer cells

Anti-CD32c Antibody - Protocols

Provided below are standard protocols that you may find useful for product applications.

- [Western Blot](#)
- [Blocking Peptides](#)
- [Dot Blot](#)
- [Immunohistochemistry](#)
- [Immunofluorescence](#)
- [Immunoprecipitation](#)
- [Flow Cytometry](#)
- [Cell Culture](#)

Anti-CD32c Antibody - Images

Western blot analysis of CD32c expression in HEK293T (A), HeLa (B), A549 (C), mouse lung (D) whole cell lysates.

Anti-CD32c Antibody - Background

KLH-conjugated synthetic peptide encompassing a sequence within the C-term region of human CD32c. The exact sequence is proprietary.