

Anti-DOK2 (pY299) Antibody
Rabbit polyclonal antibody to DOK2 (pY299)
Catalog # AP59764

Specification

Anti-DOK2 (pY299) Antibody - Product Information

Application	WB
Primary Accession	O60496
Reactivity	Human, Rat
Host	Rabbit
Clonality	Polyclonal
Calculated MW	45379

Anti-DOK2 (pY299) Antibody - Additional Information

Gene ID 9046

Other Names

Docking protein 2; Downstream of tyrosine kinase 2; p56(dok-2)

Target/Specificity

Recognizes endogenous levels of DOK2 (pY299) protein.

Dilution

WB~~WB (1/500 - 1/1000), IH (1/100 - 1/200), IP (1/10 - 1/100)

Format

Liquid in 0.42% Potassium phosphate, 0.87% Sodium chloride, pH 7.3, 30% glycerol, and 0.09% (W/V) sodium azide.

Storage

Store at -20 °C. Stable for 12 months from date of receipt

Anti-DOK2 (pY299) Antibody - Protein Information

Name DOK2

Function

DOK proteins are enzymatically inert adaptor or scaffolding proteins. They provide a docking platform for the assembly of multimolecular signaling complexes. DOK2 may modulate the cellular proliferation induced by IL-4, as well as IL-2 and IL-3. May be involved in modulating Bcr-Abl signaling. Attenuates EGF-stimulated MAP kinase activation (By similarity).

Tissue Location

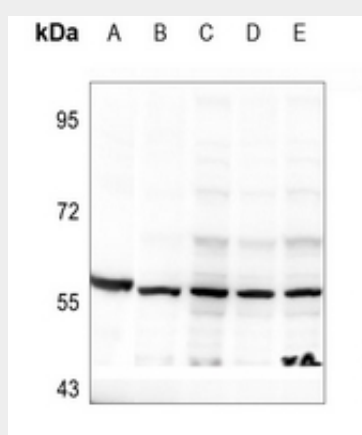
Highly expressed in peripheral blood leukocytes, lymph nodes and spleen. Lower expression in thymus, bone marrow and fetal liver.

Anti-DOK2 (pY299) Antibody - Protocols

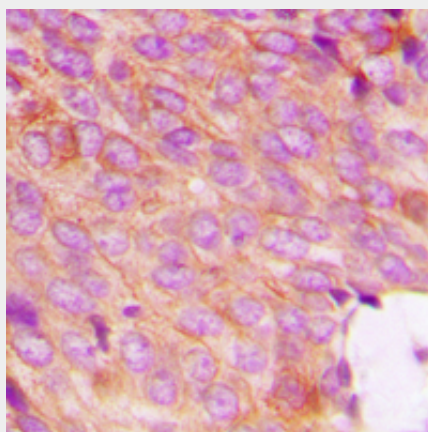
Provided below are standard protocols that you may find useful for product applications.

- [Western Blot](#)
- [Blocking Peptides](#)
- [Dot Blot](#)
- [Immunohistochemistry](#)
- [Immunofluorescence](#)
- [Immunoprecipitation](#)
- [Flow Cytometry](#)
- [Cell Culture](#)

Anti-DOK2 (pY299) Antibody - Images



Western blot analysis of DOK2 (pY299) expression in K562 (A), H9C2 (B), HEK293T-EGF-30min (C), HEK293T-EGF-15min (D), HEK293T (E) whole cell lysates.



Immunohistochemical analysis of DOK2 (pY299) staining in human breast cancer formalin fixed paraffin embedded tissue section. The section was pre-treated using heat mediated antigen retrieval with sodium citrate buffer (pH 6.0). The section was then incubated with the antibody at room temperature and detected using an HRP conjugated compact polymer system. DAB was used as the chromogen. The section was then counterstained with haematoxylin and mounted with DPX.

Anti-DOK2 (pY299) Antibody - Background

KLH-conjugated synthetic peptide encompassing a sequence within the center region of human

DOK2. The exact sequence is proprietary.