

Anti-RAB7L1 Antibody
Rabbit polyclonal antibody to RAB7L1
Catalog # AP59762**Specification**

Anti-RAB7L1 Antibody - Product Information

Application	WB
Primary Accession	O14966
Other Accession	O91YQ1
Reactivity	Human, Mouse, Rat
Host	Rabbit
Clonality	Polyclonal
Calculated MW	23155

Anti-RAB7L1 Antibody - Additional Information**Gene ID** 8934**Other Names**

Ras-related protein Rab-7L1; Rab-7-like protein 1

Target/Specificity

Recognizes endogenous levels of RAB7L1 protein.

Dilution

WB~~WB (1/500 - 1/1000)

Format

Liquid in 0.42% Potassium phosphate, 0.87% Sodium chloride, pH 7.3, 30% glycerol, and 0.09% (W/V) sodium azide.

Storage

Store at -20 °C.Stable for 12 months from date of receipt

Anti-RAB7L1 Antibody - Protein Information**Name** RAB29**Synonyms** RAB7L1**Function**

The small GTPases Rab are key regulators in vesicle trafficking (PubMed:24788816). Essential for maintaining the integrity of the endosome-trans-Golgi network structure (By similarity). Together with LRRK2, plays a role in the retrograde trafficking pathway for recycling proteins, such as mannose 6 phosphate receptor (M6PR), between lysosomes and the Golgi apparatus in a retromer-dependent manner (PubMed:24788816). Recruits LRRK2 to the Golgi complex and stimulates LRRK2

kinase activity (PubMed:29212815, PubMed:38127736). Stimulates phosphorylation of RAB10 'Thr-73' by LRRK2 (PubMed:38127736). Regulates neuronal process morphology in the intact central nervous system (CNS) (By similarity). May play a role in the formation of typhoid toxin transport intermediates during Salmonella enterica serovar Typhi (S.Typhi) epithelial cell infection (PubMed:22042847).

Cellular Location

Cell membrane; Lipid-anchor; Cytoplasmic side. Cytoplasm. Cytoplasm, perinuclear region. Golgi apparatus. Golgi apparatus membrane. Golgi apparatus, trans-Golgi network. Vacuole. Cytoplasm, cytoskeleton. Note=Colocalizes with LRRK2 along tubular structures emerging from Golgi apparatus (PubMed:29212815) Colocalizes with GM130 at the Golgi apparatus (PubMed:22042847) Colocalizes with dynamic tubules emerging from and retracting to the Golgi apparatus (PubMed:22042847, PubMed:38127736). Colocalizes with TGN46 at the trans-Golgi network (TGN) (PubMed:24788816). In Salmonella enterica serovar Typhi (S.Typhi) infected epithelial cells, is recruited and colocalized with both S.Typhi-containing vacuoles and dynamic tubules as well as those emerging from the vacuole toward the cell periphery (PubMed:22042847).

Tissue Location

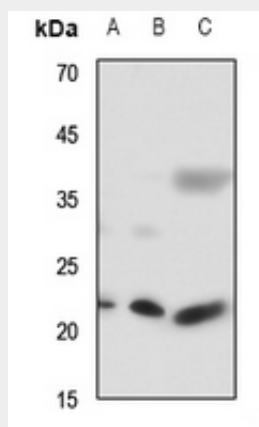
Ubiquitous..

Anti-RAB7L1 Antibody - Protocols

Provided below are standard protocols that you may find useful for product applications.

- [Western Blot](#)
- [Blocking Peptides](#)
- [Dot Blot](#)
- [Immunohistochemistry](#)
- [Immunofluorescence](#)
- [Immunoprecipitation](#)
- [Flow Cytometry](#)
- [Cell Culture](#)

Anti-RAB7L1 Antibody - Images



Western blot analysis of RAB7L1 expression in mouse lung (A), mouse kidney (B), rat kidney (C) whole cell lysates.

Anti-RAB7L1 Antibody - Background

KLH-conjugated synthetic peptide encompassing a sequence within the center region of human RAB7L1. The exact sequence is proprietary.