

**Anti-DR4 Antibody**  
Rabbit polyclonal antibody to DR4  
Catalog # AP59756

### Specification

---

#### Anti-DR4 Antibody - Product Information

Application	WB
Primary Accession	<a href="#">O00220</a>
Reactivity	Human, Mouse, Rat
Host	Rabbit
Clonality	Polyclonal
Calculated MW	50089

#### Anti-DR4 Antibody - Additional Information

Gene ID 8797

#### Other Names

APO2; DR4; TRAILR1; Tumor necrosis factor receptor superfamily member 10A; Death receptor 4; TNF-related apoptosis-inducing ligand receptor 1; TRAIL receptor 1; TRAIL-R1; CD261

#### Target/Specificity

Recognizes endogenous levels of DR4 protein.

#### Dilution

WB~~WB (1/500 - 1/1000), IP (1/10 - 1/100)

#### Format

Liquid in 0.42% Potassium phosphate, 0.87% Sodium chloride, pH 7.3, 30% glycerol, and 0.09% (W/V) sodium azide.

#### Storage

Store at -20 °C. Stable for 12 months from date of receipt

#### Anti-DR4 Antibody - Protein Information

Name TNFRSF10A

Synonyms APO2, DR4, TRAILR1

#### Function

Receptor for the cytotoxic ligand TNFSF10/TRAIL (PubMed: [26457518](http://www.uniprot.org/citations/26457518)). The adapter molecule FADD recruits caspase-8 to the activated receptor. The resulting death-inducing signaling complex (DISC) performs caspase-8 proteolytic activation which initiates the subsequent cascade of caspases (aspartate-specific cysteine proteases) mediating apoptosis (PubMed: [19090789](http://www.uniprot.org/citations/19090789)). Promotes the activation of NF- kappa-B (PubMed: [9430227](http://www.uniprot.org/citations/9430227))

target="\_blank">9430227</a>).

#### Cellular Location

Cell membrane; Single-pass type I membrane protein. Membrane raft. Cytoplasm, cytosol.  
Note=Palmitoylation is required for association with membranes.

#### Tissue Location

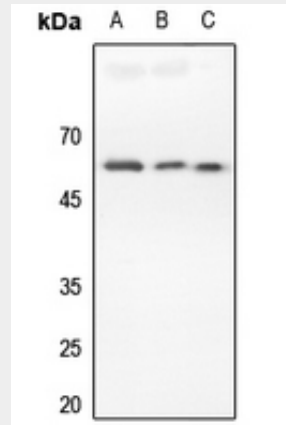
Widely expressed. High levels are found in spleen, peripheral blood leukocytes, small intestine and thymus, but also in K- 562 erythroleukemia cells, MCF-7 breast carcinoma cells and activated T-cells

### Anti-DR4 Antibody - Protocols

Provided below are standard protocols that you may find useful for product applications.

- [Western Blot](#)
- [Blocking Peptides](#)
- [Dot Blot](#)
- [Immunohistochemistry](#)
- [Immunofluorescence](#)
- [Immunoprecipitation](#)
- [Flow Cytometry](#)
- [Cell Culture](#)

### Anti-DR4 Antibody - Images



Western blot analysis of DR4 expression in A375 (A), A2780 (B), rat spleen (C) whole cell lysates.

### Anti-DR4 Antibody - Background

KLH-conjugated synthetic peptide encompassing a sequence within the C-term region of human DR4. The exact sequence is proprietary.