

**Anti-TWEAK Antibody**  
Rabbit polyclonal antibody to TWEAK  
Catalog # AP59755

**Specification**

---

**Anti-TWEAK Antibody - Product Information**

Application	<b>WB</b>
Primary Accession	<a href="#">O43508</a>
Reactivity	<b>Human</b>
Host	<b>Rabbit</b>
Clonality	<b>Polyclonal</b>
Calculated MW	<b>27216</b>

**Anti-TWEAK Antibody - Additional Information**

**Gene ID** 407977;8742

**Other Names**

APO3L; DR3LG; Tumor necrosis factor ligand superfamily member 12; APO3 ligand; TNF-related weak inducer of apoptosis; TWEAK

**Target/Specificity**

Recognizes endogenous levels of TWEAK protein.

**Dilution**

WB~~WB (1/500 - 1/1000), IP (1/10 - 1/100)

**Format**

Liquid in 0.42% Potassium phosphate, 0.87% Sodium chloride, pH 7.3, 30% glycerol, and 0.09% (W/V) sodium azide.

**Storage**

Store at -20 °C. Stable for 12 months from date of receipt

**Anti-TWEAK Antibody - Protein Information**

**Name** TNFSF12

**Synonyms** APO3L, DR3LG

**Function**

Binds to FN14 and possibly also to TNFRSF12/APO3. Weak inducer of apoptosis in some cell types. Mediates NF-kappa-B activation. Promotes angiogenesis and the proliferation of endothelial cells. Also involved in induction of inflammatory cytokines. Promotes IL8 secretion.

**Cellular Location**

Cell membrane; Single-pass type II membrane protein [Isoform TWE-PRIL]: Cell membrane; Single-pass membrane protein

### Tissue Location

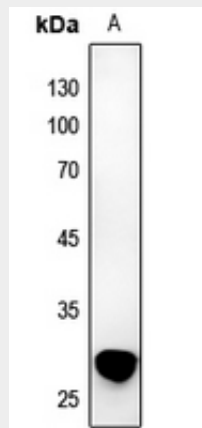
Highly expressed in adult heart, pancreas, skeletal muscle, brain, colon, small intestine, lung, ovary, prostate, spleen, lymph node, appendix and peripheral blood lymphocytes. Low expression in kidney, testis, liver, placenta, thymus and bone marrow. Also detected in fetal kidney, liver, lung and brain

### Anti-TWEAK Antibody - Protocols

Provided below are standard protocols that you may find useful for product applications.

- [Western Blot](#)
- [Blocking Peptides](#)
- [Dot Blot](#)
- [Immunohistochemistry](#)
- [Immunofluorescence](#)
- [Immunoprecipitation](#)
- [Flow Cytometry](#)
- [Cell Culture](#)

### Anti-TWEAK Antibody - Images



Western blot analysis of TWEAK expression in HeLa (A) whole cell lysates.

### Anti-TWEAK Antibody - Background

KLH-conjugated synthetic peptide encompassing a sequence within the center region of human TWEAK. The exact sequence is proprietary.