

**Anti-EDG6 Antibody**  
Rabbit polyclonal antibody to EDG6  
Catalog # AP59750

**Specification**

---

**Anti-EDG6 Antibody - Product Information**

Application	WB
Primary Accession	<a href="#">O95977</a>
Reactivity	Human, Mouse
Host	Rabbit
Clonality	Polyclonal
Calculated MW	41623

**Anti-EDG6 Antibody - Additional Information**

**Gene ID** 8698

**Other Names**

EDG6; Sphingosine 1-phosphate receptor 4; S1P receptor 4; S1P4; Endothelial differentiation G-protein coupled receptor 6; Sphingosine 1-phosphate receptor Edg-6; S1P receptor Edg-6

**Target/Specificity**

Recognizes endogenous levels of EDG6 protein.

**Dilution**

WB~~WB (1/500 - 1/1000)

**Format**

Liquid in 0.42% Potassium phosphate, 0.87% Sodium chloride, pH 7.3, 30% glycerol, and 0.09% (W/V) sodium azide.

**Storage**

Store at -20 °C. Stable for 12 months from date of receipt

**Anti-EDG6 Antibody - Protein Information**

**Name** S1PR4

**Synonyms** EDG6

**Function**

Receptor for the lysosphingolipid sphingosine 1-phosphate (S1P). S1P is a bioactive lysophospholipid that elicits diverse physiological effect on most types of cells and tissues. May be involved in cell migration processes that are specific for lymphocytes.

**Cellular Location**

Cell membrane; Multi-pass membrane protein.

### Tissue Location

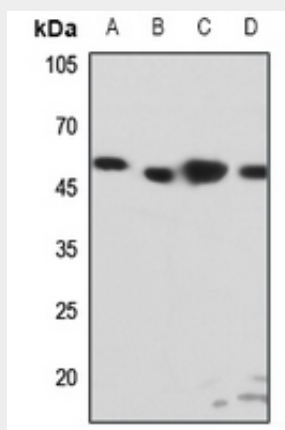
Specifically expressed in fetal and adult lymphoid and hematopoietic tissue as well as in lung. Considerable level of expression in adult and fetal spleen as well as adult peripheral leukocytes and lung. Lower expression in adult thymus, lymph node, bone marrow, and appendix as well as in fetal liver, thymus, and lung

### Anti-EDG6 Antibody - Protocols

Provided below are standard protocols that you may find useful for product applications.

- [Western Blot](#)
- [Blocking Peptides](#)
- [Dot Blot](#)
- [Immunohistochemistry](#)
- [Immunofluorescence](#)
- [Immunoprecipitation](#)
- [Flow Cytometry](#)
- [Cell Culture](#)

### Anti-EDG6 Antibody - Images



Western blot analysis of EDG6 expression in HEK293T (A), Hela (B), HepG2 (C), mouse spleen (D) whole cell lysates.

### Anti-EDG6 Antibody - Background

KLH-conjugated synthetic peptide encompassing a sequence within the C-term region of human EDG6. The exact sequence is proprietary.