

**Anti-HAT1 Antibody**  
Rabbit polyclonal antibody to HAT1  
Catalog # AP59745

**Specification**

---

**Anti-HAT1 Antibody - Product Information**

Application	WB
Primary Accession	<a href="#">O14929</a>
Other Accession	<a href="#">Q8BY71</a>
Reactivity	Human, Mouse, Rat, Monkey, Pig, Bovine, Dog
Host	Rabbit
Clonality	Polyclonal
Calculated MW	49541

**Anti-HAT1 Antibody - Additional Information**

**Gene ID** 8520

**Other Names**

KAT1; Histone acetyltransferase type B catalytic subunit; Histone acetyltransferase 1

**Target/Specificity**

Recognizes endogenous levels of HAT1 protein.

**Dilution**

WB~~WB (1/500 - 1/1000)

**Format**

Liquid in 0.42% Potassium phosphate, 0.87% Sodium chloride, pH 7.3, 30% glycerol, and 0.09% (W/V) sodium azide.

**Storage**

Store at -20 °C. Stable for 12 months from date of receipt

**Anti-HAT1 Antibody - Protein Information**

**Name** HAT1

**Synonyms** KAT1

**Function**

Histone acetyltransferase that plays a role in different biological processes including cell cycle progression, glucose metabolism, histone production or DNA damage repair (PubMed: [20953179](http://www.uniprot.org/citations/20953179), PubMed: [23653357](http://www.uniprot.org/citations/23653357), PubMed: [31278053](http://www.uniprot.org/citations/31278053), PubMed: [32081014](http://www.uniprot.org/citations/32081014)). Coordinates

histone production and acetylation via H4 promoter binding (PubMed:<a href="http://www.uniprot.org/citations/31278053" target="\_blank">31278053</a>). Acetylates histone H4 at 'Lys-5' (H4K5ac) and 'Lys-12' (H4K12ac) and, to a lesser extent, histone H2A at 'Lys-5' (H2AK5ac) (PubMed:<a href="http://www.uniprot.org/citations/11585814" target="\_blank">11585814</a>, PubMed:<a href="http://www.uniprot.org/citations/22615379" target="\_blank">22615379</a>). Drives H4 production by chromatin binding to support chromatin replication and acetylation. Since transcription of H4 genes is tightly coupled to S-phase, plays an important role in S-phase entry and progression (PubMed:<a href="http://www.uniprot.org/citations/31278053" target="\_blank">31278053</a>). Promotes homologous recombination in DNA repair by facilitating histone turnover and incorporation of acetylated H3.3 at sites of double-strand breaks (PubMed:<a href="http://www.uniprot.org/citations/23653357" target="\_blank">23653357</a>). In addition, acetylates other substrates such as chromatin-related proteins (PubMed:<a href="http://www.uniprot.org/citations/32081014" target="\_blank">32081014</a>). Acetylates also RSAD2 which mediates the interaction of ubiquitin ligase UBE4A with RSAD2 leading to RSAD2 ubiquitination and subsequent degradation (PubMed:<a href="http://www.uniprot.org/citations/31812350" target="\_blank">31812350</a>).

### Cellular Location

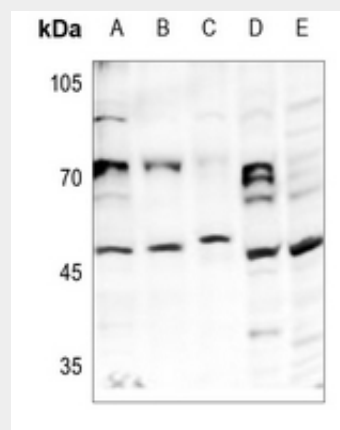
[Isoform A]: Nucleus matrix Mitochondrion

### Anti-HAT1 Antibody - Protocols

Provided below are standard protocols that you may find useful for product applications.

- [Western Blot](#)
- [Blocking Peptides](#)
- [Dot Blot](#)
- [Immunohistochemistry](#)
- [Immunofluorescence](#)
- [Immunoprecipitation](#)
- [Flow Cytometry](#)
- [Cell Culture](#)

### Anti-HAT1 Antibody - Images



Western blot analysis of HAT1 expression in EC9706 (A), SGC7901 (B), HCT116 (C), CT26 (D), PC12 (E) whole cell lysates.

### Anti-HAT1 Antibody - Background

KLH-conjugated synthetic peptide encompassing a sequence within the C-term region of human HAT1. The exact sequence is proprietary.