

Anti-MMP23 Antibody
Rabbit polyclonal antibody to MMP23
Catalog # AP59744

Specification

Anti-MMP23 Antibody - Product Information

Application	WB
Primary Accession	O75900
Other Accession	O88676
Reactivity	Human, Mouse, Rat, Monkey
Host	Rabbit
Clonality	Polyclonal
Calculated MW	43935

Anti-MMP23 Antibody - Additional Information

Gene ID 8510

Other Names

MMP21; MMP21; MMP22; Matrix metalloproteinase-23; MMP-23; Femalysin; MIFR-1; Matrix metalloproteinase-21; MMP-21; Matrix metalloproteinase-22; MMP-22

Target/Specificity

Recognizes endogenous levels of MMP23 protein.

Dilution

WB~~WB (1/500 - 1/1000)

Format

Liquid in 0.42% Potassium phosphate, 0.87% Sodium chloride, pH 7.3, 30% glycerol, and 0.09% (W/V) sodium azide.

Storage

Store at -20 °C. Stable for 12 months from date of receipt

Anti-MMP23 Antibody - Protein Information

Name MMP23B

Synonyms MMP21, MMP22

Function

Protease. May regulate the surface expression of some potassium channels by retaining them in the endoplasmic reticulum (By similarity).

Cellular Location

Endoplasmic reticulum membrane; Single-pass type II membrane protein. Membrane; Single-pass type II membrane protein. Note=A secreted form produced by proteolytic cleavage may also exist.

Tissue Location

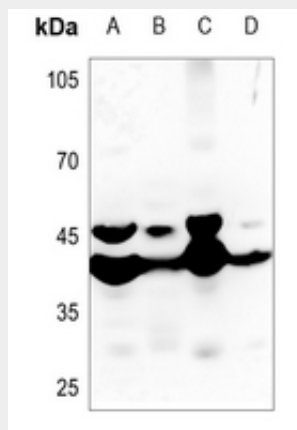
Predominantly expressed in ovary, testis and prostate.

Anti-MMP23 Antibody - Protocols

Provided below are standard protocols that you may find useful for product applications.

- [Western Blot](#)
- [Blocking Peptides](#)
- [Dot Blot](#)
- [Immunohistochemistry](#)
- [Immunofluorescence](#)
- [Immunoprecipitation](#)
- [Flow Cytometry](#)
- [Cell Culture](#)

Anti-MMP23 Antibody - Images



Western blot analysis of MMP23 expression in mouse heart (A), mouse muscle (B), rat heart (C), rat muscle (D) whole cell lysates.

Anti-MMP23 Antibody - Background

KLH-conjugated synthetic peptide encompassing a sequence within the C-term region of human MMP23. The exact sequence is proprietary.