

**Anti-Adracalin Antibody**  
Rabbit polyclonal antibody to Adracalin  
Catalog # AP59736

**Specification**

---

**Anti-Adracalin Antibody - Product Information**

Application	<b>WB</b>
Primary Accession	<a href="#">O9NRG9</a>
Other Accession	<a href="#">P58742</a>
Reactivity	<b>Human, Mouse, Rat</b>
Host	<b>Rabbit</b>
Clonality	<b>Polyclonal</b>
Calculated MW	<b>59574</b>

**Anti-Adracalin Antibody - Additional Information**

**Gene ID** 8086

**Other Names**

ADRACALA; Aladin; Adracalin

**Target/Specificity**

Recognizes endogenous levels of Adracalin protein.

**Dilution**

WB~~WB (1/500 - 1/1000)

**Format**

Liquid in 0.42% Potassium phosphate, 0.87% Sodium chloride, pH 7.3, 30% glycerol, and 0.09% (W/V) sodium azide.

**Storage**

Store at -20 °C. Stable for 12 months from date of receipt

**Anti-Adracalin Antibody - Protein Information**

**Name** AAAS

**Synonyms** ADRACALA

**Function**

Plays a role in the normal development of the peripheral and central nervous system (PubMed: <a href="http://www.uniprot.org/citations/11062474" target="\_blank">11062474</a>, PubMed: <a href="http://www.uniprot.org/citations/11159947" target="\_blank">11159947</a>, PubMed: <a href="http://www.uniprot.org/citations/16022285" target="\_blank">16022285</a>). Required for the correct localization of aurora kinase AURKA and the microtubule minus end-binding protein NUMA1 as well as a subset of AURKA targets which ensures proper spindle formation and timely chromosome alignment (PubMed: <a href="http://www.uniprot.org/citations/26246606" target="\_blank">26246606</a>)

target="\_blank">26246606</a>).

#### Cellular Location

Nucleus, nuclear pore complex. Cytoplasm, cytoskeleton, spindle pole. Nucleus envelope. Note=In metaphase cells localizes within the spindle with some accumulation around spindle poles, with the highest concentration between the centrosome and metaphase plate (PubMed:26246606). The localization to the spindle is microtubule- mediated (PubMed:26246606).

#### Tissue Location

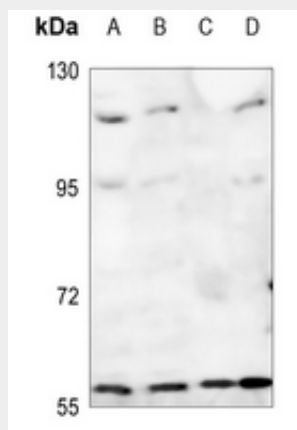
Widely expressed (PubMed:11159947, PubMed:16022285). Particularly abundant in cerebellum, corpus callosum, adrenal gland, pituitary gland, gastrointestinal structures and fetal lung (PubMed:11159947).

### Anti-Adracalin Antibody - Protocols

Provided below are standard protocols that you may find useful for product applications.

- [Western Blot](#)
- [Blocking Peptides](#)
- [Dot Blot](#)
- [Immunohistochemistry](#)
- [Immunofluorescence](#)
- [Immunoprecipitation](#)
- [Flow Cytometry](#)
- [Cell Culture](#)

### Anti-Adracalin Antibody - Images



Western blot analysis of Adracalin expression in Hela (A), A375 (B), mouse testis (C), rat testis (D) whole cell lysates.

### Anti-Adracalin Antibody - Background

KLH-conjugated synthetic peptide encompassing a sequence within the C-term region of human Adracalin. The exact sequence is proprietary.