

Anti-Vitronectin Antibody
Rabbit polyclonal antibody to Vitronectin
Catalog # AP59731

Specification

Anti-Vitronectin Antibody - Product Information

Application	WB
Primary Accession	P04004
Reactivity	Human
Host	Rabbit
Clonality	Polyclonal
Calculated MW	54306

Anti-Vitronectin Antibody - Additional Information

Gene ID 7448

Other Names

Vitronectin; VN; S-protein; Serum-spreading factor; V75

Target/Specificity

Recognizes endogenous levels of Vitronectin protein.

Dilution

WB~~WB (1/500 - 1/1000)

Format

Liquid in 0.42% Potassium phosphate, 0.87% Sodium chloride, pH 7.3, 30% glycerol, and 0.09% (W/V) sodium azide.

Storage

Store at -20 °C. Stable for 12 months from date of receipt

Anti-Vitronectin Antibody - Protein Information

Name VTN

Function

Vitronectin is a cell adhesion and spreading factor found in serum and tissues. Vitronectin interact with glycosaminoglycans and proteoglycans. Is recognized by certain members of the integrin family and serves as a cell-to-substrate adhesion molecule. Inhibitor of the membrane-damaging effect of the terminal cytolytic complement pathway.

Cellular Location

Secreted, extracellular space

Tissue Location

Expressed in the retina pigment epithelium (at protein level) (PubMed:25136834). Expressed in

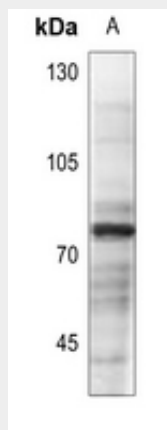
plasma (at protein level) (PubMed:2448300). Expressed in serum (at protein level) (PubMed:29567995).

Anti-Vitronectin Antibody - Protocols

Provided below are standard protocols that you may find useful for product applications.

- [Western Blot](#)
- [Blocking Peptides](#)
- [Dot Blot](#)
- [Immunohistochemistry](#)
- [Immunofluorescence](#)
- [Immunoprecipitation](#)
- [Flow Cytometry](#)
- [Cell Culture](#)

Anti-Vitronectin Antibody - Images



Western blot analysis of Vitronectin expression in K562 (A) whole cell lysates.

Anti-Vitronectin Antibody - Background

KLH-conjugated synthetic peptide encompassing a sequence within the center region of human Vitronectin. The exact sequence is proprietary.