

**Anti-UBC9 Antibody**  
Rabbit polyclonal antibody to UBC9  
Catalog # AP59724

**Specification**

---

**Anti-UBC9 Antibody - Product Information**

Application	<b>WB</b>
Primary Accession	<a href="#">P63279</a>
Other Accession	<a href="#">P63280</a>
Reactivity	<b>Human, Mouse, Rat, Zebrafish, Chicken</b>
Host	<b>Rabbit</b>
Clonality	<b>Polyclonal</b>
Calculated MW	<b>18007</b>

**Anti-UBC9 Antibody - Additional Information**

**Gene ID** 7329

**Other Names**

UBC9; UBCE9; SUMO-conjugating enzyme UBC9; SUMO-protein ligase; Ubiquitin carrier protein 9; Ubiquitin carrier protein I; Ubiquitin-conjugating enzyme E2 I; Ubiquitin-protein ligase I; p18

**Target/Specificity**

Recognizes endogenous levels of UBC9 protein.

**Dilution**

WB~~WB (1/500 - 1/1000)

**Format**

Liquid in 0.42% Potassium phosphate, 0.87% Sodium chloride, pH 7.3, 30% glycerol, and 0.09% (W/V) sodium azide.

**Storage**

Store at -20 °C. Stable for 12 months from date of receipt

**Anti-UBC9 Antibody - Protein Information**

**Name** UBE2I

**Synonyms** UBC9, UBCE9

**Function**

Accepts the ubiquitin-like proteins SUMO1, SUMO2, SUMO3, SUMO4 and SUMO1P1/SUMO5 from the UBLE1A-UBLE1B E1 complex and catalyzes their covalent attachment to other proteins with the help of an E3 ligase such as RANBP2, CBX4 and ZNF451. Can catalyze the formation of poly-SUMO chains. Necessary for sumoylation of FOXL2 and KAT5. Essential for nuclear architecture and chromosome segregation. Sumoylates p53/TP53 at 'Lys-386'. Mediates sumoylation of ERCC6 which is essential for its transcription-coupled nucleotide excision repair

activity (PubMed:<a href="http://www.uniprot.org/citations/26620705" target="\_blank">26620705</a>).

#### Cellular Location

Nucleus. Cytoplasm Cytoplasm, perinuclear region Note=Mainly nuclear (By similarity). In spermatocytes, localizes in synaptonemal complexes (PubMed:8610150). Recruited by BCL11A into the nuclear body (By similarity). {ECO:0000250|UniProtKB:P63280, ECO:0000269|PubMed:8610150}

#### Tissue Location

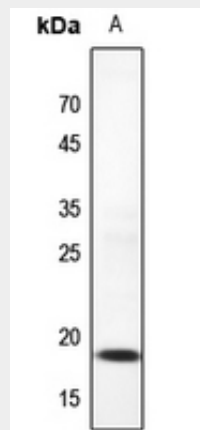
Expressed in heart, skeletal muscle, pancreas, kidney, liver, lung, placenta and brain. Also expressed in testis and thymus.

### Anti-UBC9 Antibody - Protocols

Provided below are standard protocols that you may find useful for product applications.

- [Western Blot](#)
- [Blocking Peptides](#)
- [Dot Blot](#)
- [Immunohistochemistry](#)
- [Immunofluorescence](#)
- [Immunoprecipitation](#)
- [Flow Cytometry](#)
- [Cell Culture](#)

### Anti-UBC9 Antibody - Images



Western blot analysis of UBC9 expression in zebrafish (A) whole cell lysates.

### Anti-UBC9 Antibody - Background

KLH-conjugated synthetic peptide encompassing a sequence within the C-term region of human UBC9. The exact sequence is proprietary.