

Anti-TCTP Antibody
Rabbit polyclonal antibody to TCTP
Catalog # AP59723**Specification**

Anti-TCTP Antibody - Product Information

Application	WB, IF
Primary Accession	P13693
Reactivity	Human, Mouse, Rat, Pig, Bovine
Host	Rabbit
Clonality	Polyclonal
Calculated MW	19595

Anti-TCTP Antibody - Additional Information**Gene ID** 7178**Other Names**

Translationally-controlled tumor protein; TCTP; Fortilin; Histamine-releasing factor; HRF; p23

Target/Specificity

Recognizes endogenous levels of TCTP protein.

DilutionWB~~WB (1/500 - 1/1000), IH (1/100 - 1/200), IF/IC (1/100 - 1/500), IP (1/10 - 1/100)
IF~~WB (1/500 - 1/1000), IH (1/100 - 1/200), IF/IC (1/100 - 1/500), IP (1/10 - 1/100)**Format**

Liquid in 0.42% Potassium phosphate, 0.87% Sodium chloride, pH 7.3, 30% glycerol, and 0.09% (W/V) sodium azide.

Storage

Store at -20 °C. Stable for 12 months from date of receipt

Anti-TCTP Antibody - Protein Information**Name** TPT1**Function**Involved in calcium binding and microtubule stabilization (PubMed: [12167714](http://www.uniprot.org/citations/12167714), PubMed: [15162379](http://www.uniprot.org/citations/15162379), PubMed: [15958728](http://www.uniprot.org/citations/15958728)). Acts as a negative regulator of TSC22D1-mediated apoptosis, via interaction with and destabilization of TSC22D1 protein (PubMed: [18325344](http://www.uniprot.org/citations/18325344)).**Cellular Location**

Cytoplasm.

Tissue Location

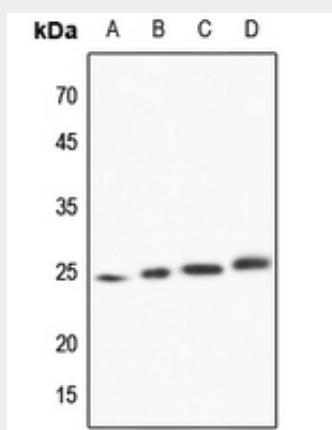
Found in several healthy and tumoral cells including erythrocytes, hepatocytes, macrophages, platelets, keratinocytes, erythroleukemia cells, gliomas, melanomas, hepatoblastomas, and lymphomas. It cannot be detected in kidney and renal cell carcinoma (RCC). Expressed in placenta and prostate

Anti-TCTP Antibody - Protocols

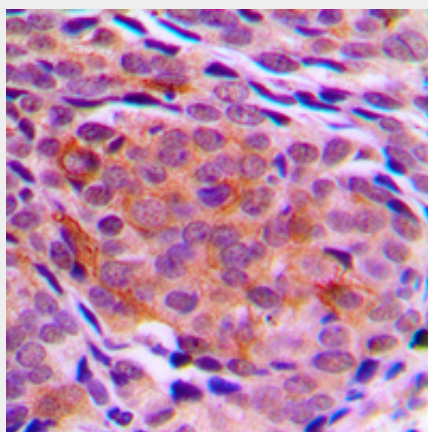
Provided below are standard protocols that you may find useful for product applications.

- [Western Blot](#)
- [Blocking Peptides](#)
- [Dot Blot](#)
- [Immunohistochemistry](#)
- [Immunofluorescence](#)
- [Immunoprecipitation](#)
- [Flow Cytometry](#)
- [Cell Culture](#)

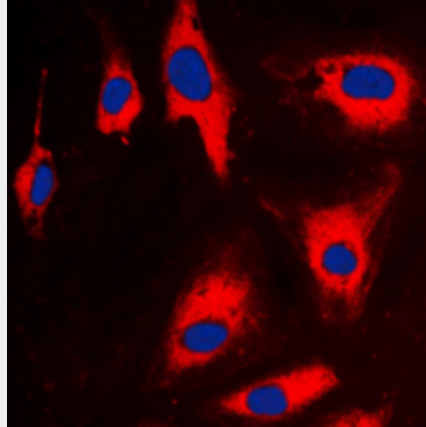
Anti-TCTP Antibody - Images



Western blot analysis of TCTP expression in Hela (A), mouse kidney (B), mouse lung (C), rat lung (D) whole cell lysates.



Immunohistochemical analysis of TCTP staining in human breast cancer formalin fixed paraffin embedded tissue section. The section was pre-treated using heat mediated antigen retrieval with sodium citrate buffer (pH 6.0). The section was then incubated with the antibody at room temperature and detected using an HRP conjugated compact polymer system. DAB was used as the chromogen. The section was then counterstained with haematoxylin and mounted with DPX.



Immunofluorescent analysis of TCTP staining in CCRFCEM cells. Formalin-fixed cells were permeabilized with 0.1% Triton X-100 in TBS for 5-10 minutes and blocked with 3% BSA-PBS for 30 minutes at room temperature. Cells were probed with the primary antibody in 3% BSA-PBS and incubated overnight at 4 °C in a humidified chamber. Cells were washed with PBST and incubated with a DyLight 594-conjugated secondary antibody (red) in PBS at room temperature in the dark. DAPI was used to stain the cell nuclei (blue).

Anti-TCTP Antibody - Background

KLH-conjugated synthetic peptide encompassing a sequence within the center region of human TCTP. The exact sequence is proprietary.