

Anti-NKX2-1 Antibody
Rabbit polyclonal antibody to NKX2-1
Catalog # AP59718

Specification

Anti-NKX2-1 Antibody - Product Information

Application	WB
Primary Accession	P43699
Other Accession	P50220
Reactivity	Human, Mouse, Rat, Zebrafish, Pig, SARS, Dog
Host	Rabbit
Clonality	Polyclonal
Calculated MW	38596

Anti-NKX2-1 Antibody - Additional Information

Gene ID 7080

Other Names

NKX2A; TITF1; TTF1; Homeobox protein Nkx-2.1; Homeobox protein NK-2 homolog A; Thyroid nuclear factor 1; Thyroid transcription factor 1; TTF-1

Target/Specificity

Recognizes endogenous levels of NKX2-1 protein.

Dilution

WB~~WB (1/500 - 1/1000)

Format

Liquid in 0.42% Potassium phosphate, 0.87% Sodium chloride, pH 7.3, 30% glycerol, and 0.09% (W/V) sodium azide.

Storage

Store at -20 °C. Stable for 12 months from date of receipt

Anti-NKX2-1 Antibody - Protein Information

Name NKX2-1 ([HGNC:11825](#))

Synonyms NKX2A, TITF1, TTF1

Function

Transcription factor that binds and activates the promoter of thyroid specific genes such as thyroglobulin, thyroperoxidase, and thyrotropin receptor. Crucial in the maintenance of the thyroid differentiation phenotype. May play a role in lung development and surfactant homeostasis. Forms a regulatory loop with GRHL2 that coordinates lung epithelial cell morphogenesis and differentiation. Activates the transcription of GNRHR and plays a role in enhancing the circadian

oscillation of its gene expression. Represses the transcription of the circadian transcriptional repressor NR1D1 (By similarity).

Cellular Location

Nucleus {ECO:0000250|UniProtKB:P50220}.

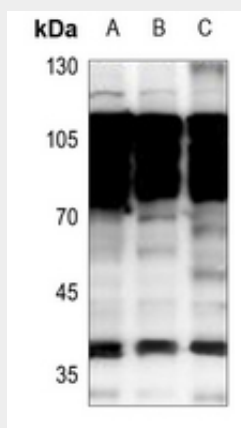
Tissue Location

Thyroid and lung.

Anti-NKX2-1 Antibody - Protocols

Provided below are standard protocols that you may find useful for product applications.

- [Western Blot](#)
- [Blocking Peptides](#)
- [Dot Blot](#)
- [Immunohistochemistry](#)
- [Immunofluorescence](#)
- [Immunoprecipitation](#)
- [Flow Cytometry](#)
- [Cell Culture](#)

Anti-NKX2-1 Antibody - Images

Western blot analysis of NKX2-1 expression in A549 (A), H1792 (B), HCC827 (C) whole cell lysates.

Anti-NKX2-1 Antibody - Background

KLH-conjugated synthetic peptide encompassing a sequence within the N-term region of human NKX2-1. The exact sequence is proprietary.