

Anti-CD141 Antibody
Rabbit polyclonal antibody to CD141
Catalog # AP59716

Specification

Anti-CD141 Antibody - Product Information

Application	WB
Primary Accession	P07204
Other Accession	P15306
Reactivity	Human, Mouse, Rat
Host	Rabbit
Clonality	Polyclonal
Calculated MW	60329

Anti-CD141 Antibody - Additional Information

Gene ID 7056

Other Names

THRM; Thrombomodulin; TM; Fetomodulin; CD141

Target/Specificity

Recognizes endogenous levels of CD141 protein.

Dilution

WB~~WB (1/500 - 1/1000)

Format

Liquid in 0.42% Potassium phosphate, 0.87% Sodium chloride, pH 7.3, 30% glycerol, and 0.09% (W/V) sodium azide.

Storage

Store at -20 °C. Stable for 12 months from date of receipt

Anti-CD141 Antibody - Protein Information

Name THBD

Synonyms THRM

Function

Endothelial cell receptor that plays a critical role in regulating several physiological processes including hemostasis, coagulation, fibrinolysis, inflammation, and angiogenesis (PubMed: [10761923](http://www.uniprot.org/citations/10761923)). Acts as a cofactor for thrombin activation of protein C/PROC on the surface of vascular endothelial cells leading to initiation of the activated protein C anticoagulant pathway (PubMed: [29323190](http://www.uniprot.org/citations/29323190), PubMed: [33836597](http://www.uniprot.org/citations/33836597), PubMed: [33836597](http://www.uniprot.org/citations/33836597)).

[9395524](http://www.uniprot.org/citations/9395524)). Also accelerates the activation of the plasma carboxypeptidase B2/CPB2, which catalyzes removal of C-terminal basic amino acids from its substrates including kinins or anaphylatoxins leading to fibrinolysis inhibition (PubMed:[26663133](http://www.uniprot.org/citations/26663133)). Plays critical protective roles in changing the cleavage specificity of protease-activated receptor 1/PAR1, inhibiting endothelial cell permeability and inflammation (By similarity). Suppresses inflammation distinctly from its anticoagulant cofactor activity by sequestering HMGB1 thereby preventing it from engaging cellular receptors such as RAGE and contributing to the inflammatory response (PubMed:[15841214](http://www.uniprot.org/citations/15841214)).

Cellular Location

Membrane; Single-pass type I membrane protein.

Tissue Location

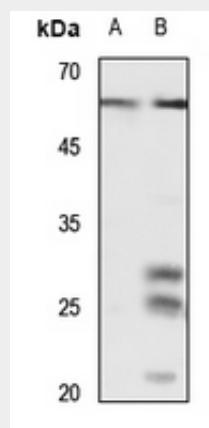
Endothelial cells are unique in synthesizing thrombomodulin

Anti-CD141 Antibody - Protocols

Provided below are standard protocols that you may find useful for product applications.

- [Western Blot](#)
- [Blocking Peptides](#)
- [Dot Blot](#)
- [Immunohistochemistry](#)
- [Immunofluorescence](#)
- [Immunoprecipitation](#)
- [Flow Cytometry](#)
- [Cell Culture](#)

Anti-CD141 Antibody - Images



Western blot analysis of CD141 expression in HEK293T (A), mouse lung (B) whole cell lysates.

Anti-CD141 Antibody - Background

KLH-conjugated synthetic peptide encompassing a sequence within the C-term region of human CD141. The exact sequence is proprietary.