

**Anti-CD156b Antibody**  
Rabbit polyclonal antibody to CD156b  
Catalog # AP59713**Specification**

---

**Anti-CD156b Antibody - Product Information**

Application	<b>WB</b>
Primary Accession	<a href="#">P78536</a>
Other Accession	<a href="#">O9Z0F8</a>
Reactivity	<b>Human, Mouse, Rat</b>
Host	<b>Rabbit</b>
Clonality	<b>Polyclonal</b>
Calculated MW	<b>93021</b>

**Anti-CD156b Antibody - Additional Information****Gene ID** 6868**Other Names**

CSVP; TACE; Disintegrin and metalloproteinase domain-containing protein 17; ADAM 17; Snake venom-like protease; TNF-alpha convertase; TNF-alpha-converting enzyme; CD156b

**Target/Specificity**

Recognizes endogenous levels of CD156b protein.

**Dilution**

WB~~WB (1/500 - 1/1000)

**Format**

Liquid in 0.42% Potassium phosphate, 0.87% Sodium chloride, pH 7.3, 30% glycerol, and 0.09% (W/V) sodium azide.

**Storage**

Store at -20 °C. Stable for 12 months from date of receipt

**Anti-CD156b Antibody - Protein Information****Name** ADAM17 ([HGNC:195](#))**Synonyms** CSVP, TACE**Function**

Transmembrane metalloprotease which mediates the ectodomain shedding of a myriad of transmembrane proteins including adhesion proteins, growth factor precursors and cytokines important for inflammation and immunity (PubMed:&lt;a href="http://www.uniprot.org/citations/24226769" target="\_blank"&gt;24226769&lt;/a&gt;, PubMed:&lt;a href="http://www.uniprot.org/citations/24227843" target="\_blank"&gt;24227843&lt;/a&gt;, PubMed:&lt;a href="http://www.uniprot.org/citations/28060820" target="\_blank"&gt;28060820&lt;/a&gt;, PubMed:&lt;a href="http://www.uniprot.org/citations/28060820" target="\_blank"&gt;28060820&lt;/a&gt;, PubMed:&lt;a href="http://www.uniprot.org/citations/28060820" target="\_blank"&gt;28060820&lt;/a&gt;)

[28923481](http://www.uniprot.org/citations/28923481) </a>). Cleaves the membrane-bound precursor of TNF-alpha to its mature soluble form (PubMed: <a href="http://www.uniprot.org/citations/9034191" target="\_blank">9034191 </a>, PubMed: <a href="http://www.uniprot.org/citations/36078095" target="\_blank">36078095 </a>). Responsible for the proteolytical release of soluble JAM3 from endothelial cells surface (PubMed: <a href="http://www.uniprot.org/citations/20592283" target="\_blank">20592283 </a>). Responsible for the proteolytic release of several other cell-surface proteins, including p75 TNF-receptor, interleukin 1 receptor type II, p55 TNF- receptor, transforming growth factor-alpha, L-selectin, growth hormone receptor, MUC1 and the amyloid precursor protein (PubMed: <a href="http://www.uniprot.org/citations/12441351" target="\_blank">12441351 </a>). Acts as an activator of Notch pathway by mediating cleavage of Notch, generating the membrane-associated intermediate fragment called Notch extracellular truncation (NEXT) (PubMed: <a href="http://www.uniprot.org/citations/24226769" target="\_blank">24226769 </a>). Plays a role in the proteolytic processing of ACE2 (PubMed: <a href="http://www.uniprot.org/citations/24227843" target="\_blank">24227843 </a>). Plays a role in hemostasis through shedding of GP1BA, the platelet glycoprotein Ib alpha chain (By similarity). Mediates the proteolytic cleavage of LAG3, leading to release the secreted form of LAG3 (By similarity). Mediates the proteolytic cleavage of IL6R, leading to the release of secreted form of IL6R (PubMed: <a href="http://www.uniprot.org/citations/26876177" target="\_blank">26876177 </a>, PubMed: <a href="http://www.uniprot.org/citations/28060820" target="\_blank">28060820 </a>). Mediates the proteolytic cleavage and shedding of FCGR3A upon NK cell stimulation, a mechanism that allows for increased NK cell motility and detachment from opsonized target cells. Cleaves TREM2, resulting in shedding of the TREM2 ectodomain (PubMed: <a href="http://www.uniprot.org/citations/28923481" target="\_blank">28923481 </a>).

#### Cellular Location

Cell membrane; Single-pass type I membrane protein

#### Tissue Location

Ubiquitously expressed. Expressed at highest levels in adult heart, placenta, skeletal muscle, pancreas, spleen, thymus, prostate, testes, ovary and small intestine, and in fetal brain, lung, liver and kidney. Expressed in natural killer cells (at protein level) (PubMed:24337742).

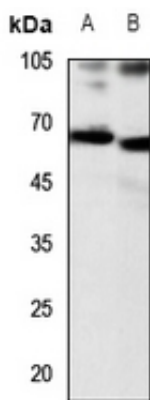
#### Anti-CD156b Antibody - Protocols

Provided below are standard protocols that you may find useful for product applications.

- [Western Blot](#)
- [Blocking Peptides](#)
- [Dot Blot](#)
- [Immunohistochemistry](#)
- [Immunofluorescence](#)
- [Immunoprecipitation](#)
- [Flow Cytometry](#)
- [Cell Culture](#)

#### Anti-CD156b Antibody - Images





Western blot analysis of CD156b expression in HEK293T (A), HGC27 (B) whole cell lysates.

#### **Anti-CD156b Antibody - Background**

KLH-conjugated synthetic peptide encompassing a sequence within the center region of human CD156b. The exact sequence is proprietary.