

**Anti-SOD1 Antibody**  
Rabbit polyclonal antibody to SOD1  
Catalog # AP59705

## Specification

---

### Anti-SOD1 Antibody - Product Information

Application	WB
Primary Accession	<a href="#">P00441</a>
Other Accession	<a href="#">P08228</a>
Reactivity	Human, Mouse, Rat, Rabbit, Monkey, Bovine, SARS
Host	Rabbit
Clonality	Polyclonal
Calculated MW	15936

### Anti-SOD1 Antibody - Additional Information

**Gene ID** 6647

#### Other Names

Superoxide dismutase [Cu-Zn]; Superoxide dismutase 1; hSod1

#### Target/Specificity

Recognizes endogenous levels of SOD1 protein.

#### Dilution

WB~~WB (1/500 - 1/1000)

#### Format

Liquid in 0.42% Potassium phosphate, 0.87% Sodium chloride, pH 7.3, 30% glycerol, and 0.09% (W/V) sodium azide.

#### Storage

Store at -20 °C. Stable for 12 months from date of receipt

### Anti-SOD1 Antibody - Protein Information

**Name** SOD1 ([HGNC:11179](#))

#### Function

Destroys radicals which are normally produced within the cells and which are toxic to biological systems.

#### Cellular Location

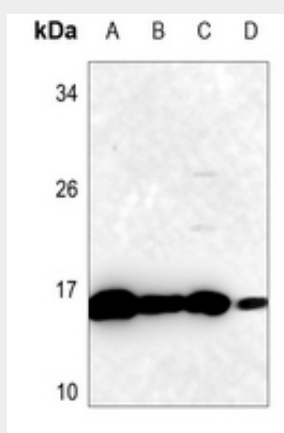
Cytoplasm. Nucleus. Note=Predominantly cytoplasmic; the pathogenic variants ALS1 Arg-86 and Ala-94 gradually aggregates and accumulates in mitochondria.

## Anti-SOD1 Antibody - Protocols

Provided below are standard protocols that you may find useful for product applications.

- [Western Blot](#)
- [Blocking Peptides](#)
- [Dot Blot](#)
- [Immunohistochemistry](#)
- [Immunofluorescence](#)
- [Immunoprecipitation](#)
- [Flow Cytometry](#)
- [Cell Culture](#)

## Anti-SOD1 Antibody - Images



Western blot analysis of SOD1 expression in mouse liver (A), mouse testis (B), rat liver (C), rat testis (D) whole cell lysates.

## Anti-SOD1 Antibody - Background

KLH-conjugated synthetic peptide encompassing a sequence within the center region of human SOD1. The exact sequence is proprietary.