

Anti-PEPT1 Antibody
Rabbit polyclonal antibody to PEPT1
Catalog # AP59700**Specification**

Anti-PEPT1 Antibody - Product Information

Application	WB
Primary Accession	P46059
Other Accession	Q9JIP7
Reactivity	Human, Mouse, Rat, Monkey
Host	Rabbit
Clonality	Polyclonal
Calculated MW	78806

Anti-PEPT1 Antibody - Additional Information**Gene ID** 6564**Other Names**

PEPT1; Solute carrier family 15 member 1; Intestinal H(+)/peptide cotransporter; Oligopeptide transporter, small intestine isoform; Peptide transporter 1

Target/Specificity

Recognizes endogenous levels of PEPT1 protein.

Dilution

WB~~WB (1/500 - 1/1000)

Format

Liquid in 0.42% Potassium phosphate, 0.87% Sodium chloride, pH 7.3, 30% glycerol, and 0.09% (W/V) sodium azide.

Storage

Store at -20 °C. Stable for 12 months from date of receipt

Anti-PEPT1 Antibody - Protein Information**Name** SLC15A1 ([HGNC:10920](#))**Function**

Electrogenic proton-coupled amino-acid transporter that transports oligopeptides of 2 to 4 amino acids with a preference for dipeptides. Transports neutral and monovalently charged peptides with a proton to peptide stoichiometry of 1:1 or 2:1 (By similarity) (PubMed:15521010, PubMed:18367661, PubMed:19685173, PubMed:26320580, PubMed:7896779, PubMed:<a

[8914574](http://www.uniprot.org/citations/8914574), PubMed:<[9835627](http://www.uniprot.org/citations/9835627)>. Primarily responsible for the absorption of dietary di- and tripeptides from the small intestinal lumen (By similarity). Mediates transepithelial transport of muramyl and N-formylated bacterial dipeptides contributing to recognition of pathogenic bacteria by the mucosal immune system (PubMed:<[15521010](http://www.uniprot.org/citations/15521010)>, PubMed:<[9835627](http://www.uniprot.org/citations/9835627)>).

Cellular Location

Apical cell membrane; Multi-pass membrane protein. Note=Localized to the apical membrane of enterocytes

Tissue Location

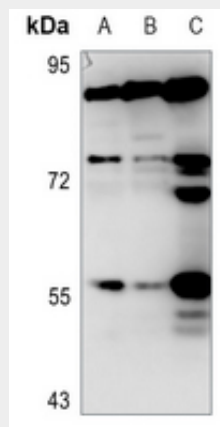
Expressed in small intestine.

Anti-PEPT1 Antibody - Protocols

Provided below are standard protocols that you may find useful for product applications.

- [Western Blot](#)
- [Blocking Peptides](#)
- [Dot Blot](#)
- [Immunohistochemistry](#)
- [Immunofluorescence](#)
- [Immunoprecipitation](#)
- [Flow Cytometry](#)
- [Cell Culture](#)

Anti-PEPT1 Antibody - Images



Western blot analysis of PEPT1 expression in HEK293T (A), H1688 (B), H1792 (C) whole cell lysates.

Anti-PEPT1 Antibody - Background

KLH-conjugated synthetic peptide encompassing a sequence within the center region of human PEPT1. The exact sequence is proprietary.