

Anti-Trypsin 3 Antibody
Rabbit polyclonal antibody to Trypsin 3
Catalog # AP59679

Specification

Anti-Trypsin 3 Antibody - Product Information

Application	WB
Primary Accession	P35030
Reactivity	Human, Mouse
Host	Rabbit
Clonality	Polyclonal
Calculated MW	32529

Anti-Trypsin 3 Antibody - Additional Information

Gene ID 5646

Other Names

PRSS4; TRY3; TRY4; Trypsin-3; Brain trypsinogen; Mesotrypsinogen; Serine protease 3; Serine protease 4; Trypsin III; Trypsin IV

Target/Specificity

Recognizes endogenous levels of Trypsin 3 protein.

Dilution

WB~~WB (1/500 - 1/1000)

Format

Liquid in 0.42% Potassium phosphate, 0.87% Sodium chloride, pH 7.3, 30% glycerol, and 0.09% (W/V) sodium azide.

Storage

Store at -20 °C. Stable for 12 months from date of receipt

Anti-Trypsin 3 Antibody - Protein Information

Name PRSS3

Synonyms PRSS4, TRY3, TRY4

Function

Digestive protease that cleaves proteins preferentially after an Arg residue and has proteolytic activity toward Kunitz-type trypsin inhibitors.

Cellular Location

Secreted.

Tissue Location

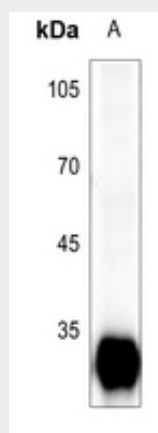
Detected in pancreas and pancreatic fluid (at protein level) (PubMed:6698368). Expressed in pancreas and brain (PubMed:8294000). Detected in ileum (PubMed:12021776)

Anti-Trypsin 3 Antibody - Protocols

Provided below are standard protocols that you may find useful for product applications.

- [Western Blot](#)
- [Blocking Peptides](#)
- [Dot Blot](#)
- [Immunohistochemistry](#)
- [Immunofluorescence](#)
- [Immunoprecipitation](#)
- [Flow Cytometry](#)
- [Cell Culture](#)

Anti-Trypsin 3 Antibody - Images



Western blot analysis of Trypsin 3 expression in mouse pancreas (A) whole cell lysates.

Anti-Trypsin 3 Antibody - Background

KLH-conjugated synthetic peptide encompassing a sequence within the center region of human Trypsin 3. The exact sequence is proprietary.