

**Anti-Trypsin 1 Antibody**  
**Rabbit polyclonal antibody to Trypsin 1**  
**Catalog # AP59678**

**Specification**

---

**Anti-Trypsin 1 Antibody - Product Information**

Application	<b>WB</b>
Primary Accession	<a href="#">P07477</a>
Reactivity	<b>Human</b>
Host	<b>Rabbit</b>
Clonality	<b>Polyclonal</b>
Calculated MW	<b>26558</b>

**Anti-Trypsin 1 Antibody - Additional Information**

**Gene ID** 5644

**Other Names**

TRP1; TRY1; TRYP1; Trypsin-1; Beta-trypsin; Cationic trypsinogen; Serine protease 1; Trypsin I

**Target/Specificity**

Recognizes endogenous levels of Trypsin 1 protein.

**Dilution**

WB~~WB (1/500 - 1/1000)

**Format**

Liquid in 0.42% Potassium phosphate, 0.87% Sodium chloride, pH 7.3, 30% glycerol, and 0.09% (W/V) sodium azide.

**Storage**

Store at -20 °C. Stable for 12 months from date of receipt

**Anti-Trypsin 1 Antibody - Protein Information**

**Name** PRSS1 ([HGNC:9475](#))

**Function**

Has activity against the synthetic substrates Boc-Phe-Ser- Arg-Mec, Boc-Leu-Thr-Arg-Mec, Boc-Gln-Ala-Arg-Mec and Boc-Val-Pro-Arg- Mec. The single-chain form is more active than the two-chain form against all of these substrates.

**Cellular Location**

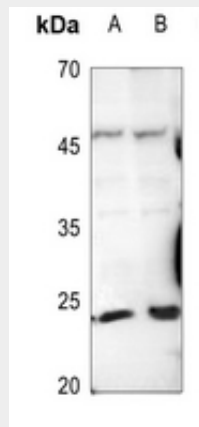
Secreted, extracellular space.

**Anti-Trypsin 1 Antibody - Protocols**

Provided below are standard protocols that you may find useful for product applications.

- [Western Blot](#)
- [Blocking Peptides](#)
- [Dot Blot](#)
- [Immunohistochemistry](#)
- [Immunofluorescence](#)
- [Immunoprecipitation](#)
- [Flow Cytometry](#)
- [Cell Culture](#)

#### **Anti-Trypsin 1 Antibody - Images**



Western blot analysis of Trypsin 1 expression in Panc1 (A), HCT116 (B) whole cell lysates.

#### **Anti-Trypsin 1 Antibody - Background**

KLH-conjugated synthetic peptide encompassing a sequence within the center region of human Trypsin 1. The exact sequence is proprietary.