

Anti-JNK1/2/3 (pT183) Antibody
Rabbit polyclonal antibody to JNK1/2/3 (pT183)
Catalog # AP59673

Specification

Anti-JNK1/2/3 (pT183) Antibody - Product Information

Application	WB, IF, E
Primary Accession	P45983 , P45984 , P53779
Other Accession	Q91Y86 , Q9WTU6 , Q61831
Reactivity	Human, Mouse, Rat, Pig, Chicken, Bovine
Host	Rabbit
Clonality	Polyclonal

Anti-JNK1/2/3 (pT183) Antibody - Additional Information

Other Names

MAPK8; JNK1; PRKM8; SAPK1; SAPK1C; Mitogen-activated protein kinase 8; MAP kinase 8; JNK-46; Stress-activated protein kinase 1c; SAPK1c; Stress-activated protein kinase JNK1; c-Jun N-terminal kinase 1; MAPK9; JNK2; PRKM9; SAPK1A; Mitogen-activated protein kinase 9; MAP kinase 9; JNK-55; Stress-activated protein kinase 1a; SAPK1a; Stress-activated protein kinase JNK2; c-Jun N-terminal kinase 2; MAPK10; JNK3; JNK3A; PRKM10; SAPK1B; Mitogen-activated protein kinase 10; MAP kinase 10; MAP kinase p49 3F12; Stress-activated protein kinase 1b; SAPK1b; Stress-activated protein kinase JNK3; c-Jun N-terminal kinase 3

Target/Specificity

Recognizes endogenous levels of JNK1/2/3 (pT183) protein.

Dilution

WB~~WB (1/500 - 1/1000), IH (1/100 - 1/200), IF/IC (1/100 - 1/500)
IF~~WB (1/500 - 1/1000), IH (1/100 - 1/200), IF/IC (1/100 - 1/500)
E~~WB (1/500 - 1/1000), IH (1/100 - 1/200), IF/IC (1/100 - 1/500)

Format

Liquid in 0.42% Potassium phosphate, 0.87% Sodium chloride, pH 7.3, 30% glycerol, and 0.09% (W/V) sodium azide.

Storage

Store at -20 °C. Stable for 12 months from date of receipt

Anti-JNK1/2/3 (pT183) Antibody - Protein Information

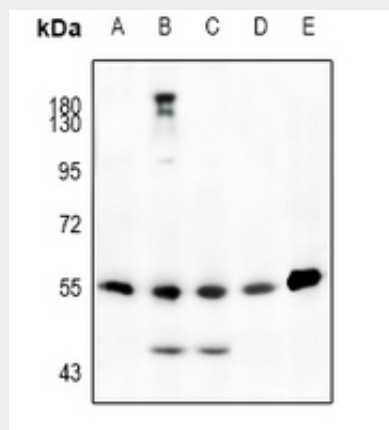
Anti-JNK1/2/3 (pT183) Antibody - Protocols

Provided below are standard protocols that you may find useful for product applications.

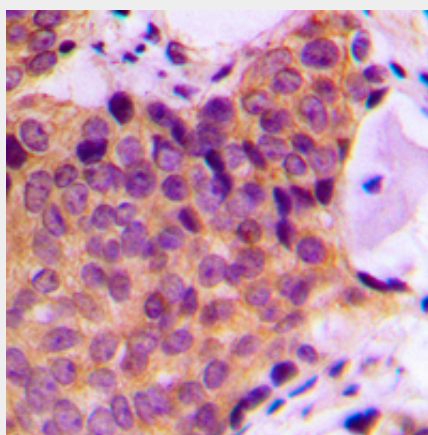
- [Western Blot](#)

- [Blocking Peptides](#)
- [Dot Blot](#)
- [Immunohistochemistry](#)
- [Immunofluorescence](#)
- [Immunoprecipitation](#)
- [Flow Cytometry](#)
- [Cell Culture](#)

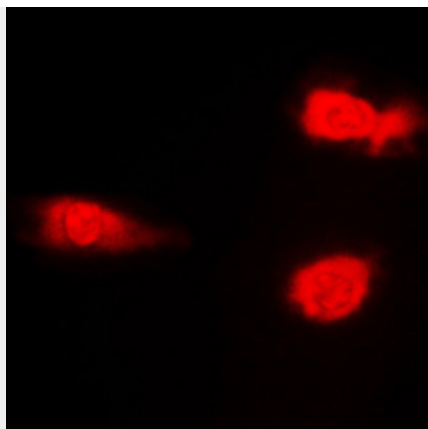
Anti-JNK1/2/3 (pT183) Antibody - Images



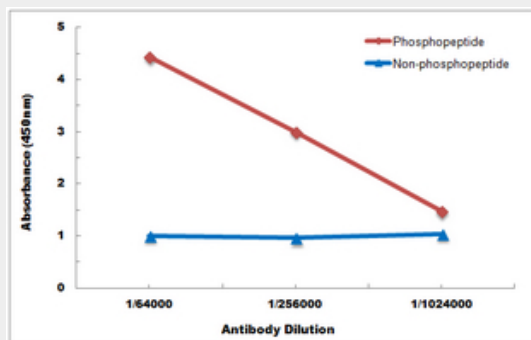
Western blot analysis of JNK1/2/3 (pT183) expression in HCT116 (A), MCF7 (B), A549 (C), rat brain (D), C6 (E) whole cell lysates.



Immunohistochemical analysis of JNK1/2/3 (pT183) staining in human breast cancer formalin fixed paraffin embedded tissue section. The section was pre-treated using heat mediated antigen retrieval with sodium citrate buffer (pH 6.0). The section was then incubated with the antibody at room temperature and detected using an HRP conjugated compact polymer system. DAB was used as the chromogen. The section was then counterstained with haematoxylin and mounted with DPX.



Immunofluorescent analysis of JNK1/2/3 (pT183) staining in NIH3T3 cells. Formalin-fixed cells were permeabilized with 0.1% Triton X-100 in TBS for 5-10 minutes and blocked with 3% BSA-PBS for 30 minutes at room temperature. Cells were probed with the primary antibody in 3% BSA-PBS and incubated overnight at 4 °C in a humidified chamber. Cells were washed with PBST and incubated with a DyLight 594-conjugated secondary antibody (red) in PBS at room temperature in the dark.



Direct ELISA antibody dose-response curve using Anti-JNK1/2/3 (pT183) Antibody. Antigen (phosphopeptide and non-phosphopeptide) concentration is 5 ug/ml. Goat Anti-Rabbit IgG (H&L) - HRP was used as the secondary antibody, and signal was developed by TMB substrate.

Anti-JNK1/2/3 (pT183) Antibody - Background

KLH-conjugated synthetic peptide encompassing a sequence within the center region of human JNK1/2/3. The exact sequence is proprietary.