

**Anti-PRKAR1B Antibody**  
Rabbit polyclonal antibody to PRKAR1B  
Catalog # AP59670**Specification**

---

**Anti-PRKAR1B Antibody - Product Information**

Application	WB
Primary Accession	<a href="#">P31321</a>
Other Accession	<a href="#">P12849</a>
Reactivity	Human, Mouse, Rat, Zebrafish, Chicken, Dog
Host	Rabbit
Clonality	Polyclonal
Calculated MW	43073

**Anti-PRKAR1B Antibody - Additional Information****Gene ID** 5575**Other Names**

cAMP-dependent protein kinase type I-beta regulatory subunit

**Target/Specificity**

Recognizes endogenous levels of PRKAR1B protein.

**Dilution**

WB~~WB (1/500 - 1/1000), IH (1/100 - 1/200)

**Format**

Liquid in 0.42% Potassium phosphate, 0.87% Sodium chloride, pH 7.3, 30% glycerol, and 0.09% (W/V) sodium azide.

**Storage**

Store at -20 °C. Stable for 12 months from date of receipt

**Anti-PRKAR1B Antibody - Protein Information****Name** PRKAR1B**Function**

Regulatory subunit of the cAMP-dependent protein kinases involved in cAMP signaling in cells.

**Cellular Location**

Cell membrane.

**Tissue Location**

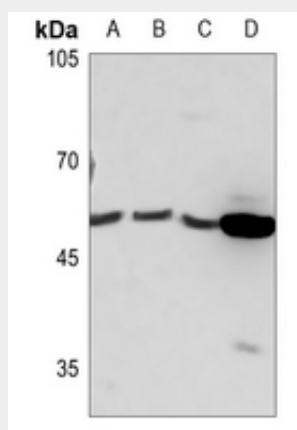
Four types of regulatory chains are found: I-alpha, I-beta, II-alpha, and II-beta. Their expression varies among tissues and is in some cases constitutive and in others inducible

## Anti-PRKAR1B Antibody - Protocols

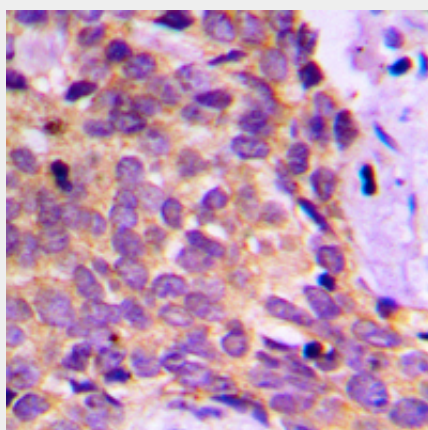
Provided below are standard protocols that you may find useful for product applications.

- [Western Blot](#)
- [Blocking Peptides](#)
- [Dot Blot](#)
- [Immunohistochemistry](#)
- [Immunofluorescence](#)
- [Immunoprecipitation](#)
- [Flow Cytometry](#)
- [Cell Culture](#)

## Anti-PRKAR1B Antibody - Images



Western blot analysis of PRKAR1B expression in HEK293T (A), U2OS (B), MCF7 (C), mouse liver (D) whole cell lysates.



Immunohistochemical analysis of PRKAR1B staining in human breast cancer formalin fixed paraffin embedded tissue section. The section was pre-treated using heat mediated antigen retrieval with sodium citrate buffer (pH 6.0). The section was then incubated with the antibody at room temperature and detected using an HRP conjugated compact polymer system. DAB was used as the chromogen. The section was then counterstained with haematoxylin and mounted with DPX.

## Anti-PRKAR1B Antibody - Background

KLH-conjugated synthetic peptide encompassing a sequence within the center region of human PRKAR1B. The exact sequence is proprietary.