

**Anti-PRKAR1A Antibody**  
Rabbit polyclonal antibody to PRKAR1A  
Catalog # AP59669

**Specification**

---

**Anti-PRKAR1A Antibody - Product Information**

Application	WB, IF
Primary Accession	<a href="#">P10644</a>
Other Accession	<a href="#">Q9DBC7</a>
Reactivity	Human, Mouse, Rat, Pig, Chicken, Bovine, SARS
Host	Rabbit
Clonality	Polyclonal
Calculated MW	42982

**Anti-PRKAR1A Antibody - Additional Information**

**Gene ID** 5573

**Other Names**

PKR1; PRKAR1; TSE1; cAMP-dependent protein kinase type I-alpha regulatory subunit; Tissue-specific extinguisher 1; TSE1

**Target/Specificity**

Recognizes endogenous levels of PRKAR1A protein.

**Dilution**

WB~~WB (1/500 - 1/1000), IF/IC (1/100 - 1/500)

IF~~WB (1/500 - 1/1000), IF/IC (1/100 - 1/500)

**Format**

Liquid in 0.42% Potassium phosphate, 0.87% Sodium chloride, pH 7.3, 30% glycerol, and 0.09% (W/V) sodium azide.

**Storage**

Store at -20 °C. Stable for 12 months from date of receipt

**Anti-PRKAR1A Antibody - Protein Information**

**Name** PRKAR1A

**Synonyms** PKR1, PRKAR1, TSE1

**Function**

Regulatory subunit of the cAMP-dependent protein kinases involved in cAMP signaling in cells.

**Cellular Location**

Cell membrane.

### Tissue Location

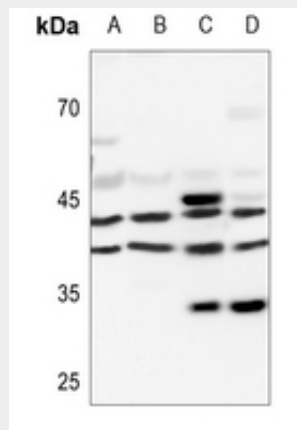
Four types of regulatory chains are found: I-alpha, I-beta, II-alpha, and II-beta. Their expression varies among tissues and is in some cases constitutive and in others inducible

### Anti-PRKAR1A Antibody - Protocols

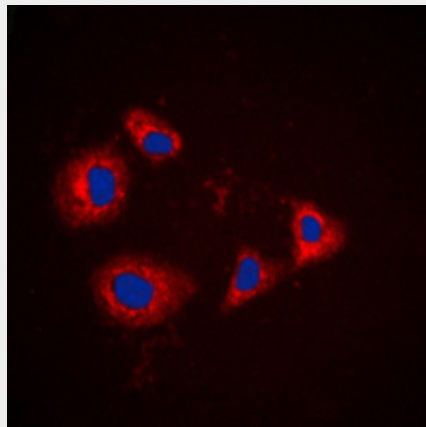
Provided below are standard protocols that you may find useful for product applications.

- [Western Blot](#)
- [Blocking Peptides](#)
- [Dot Blot](#)
- [Immunohistochemistry](#)
- [Immunofluorescence](#)
- [Immunoprecipitation](#)
- [Flow Cytometry](#)
- [Cell Culture](#)

### Anti-PRKAR1A Antibody - Images



Western blot analysis of PRKAR1A expression in HEK293T (A), MCF7 (B), mouse testis (C), rat testis (D) whole cell lysates.



Immunofluorescent analysis of PRKAR1A staining in HT29 cells. Formalin-fixed cells were permeabilized with 0.1% Triton X-100 in TBS for 5-10 minutes and blocked with 3% BSA-PBS for 30 minutes at room temperature. Cells were probed with the primary antibody in 3% BSA-PBS and incubated overnight at 4 °C in a humidified chamber. Cells were washed with PBST and incubated

with a DyLight 594-conjugated secondary antibody (red) in PBS at room temperature in the dark. DAPI was used to stain the cell nuclei (blue).

**Anti-PRKAR1A Antibody - Background**

KLH-conjugated synthetic peptide encompassing a sequence within the C-term region of human PRKAR1A. The exact sequence is proprietary.