

Anti-PLC gamma 2 (pY1217) Antibody
Rabbit polyclonal antibody to PLC gamma 2 (pY1217)
Catalog # AP59665

Specification

Anti-PLC gamma 2 (pY1217) Antibody - Product Information

Application	WB
Primary Accession	P16885
Other Accession	Q8CIH5
Reactivity	Human, Mouse, Rat, Monkey
Host	Rabbit
Clonality	Polyclonal
Calculated MW	147870

Anti-PLC gamma 2 (pY1217) Antibody - Additional Information

Gene ID 5336

Other Names

1-phosphatidylinositol 4, 5-bisphosphate phosphodiesterase gamma-2; Phosphoinositide phospholipase C-gamma-2; Phospholipase C-IV; PLC-IV; Phospholipase C-gamma-2; PLC-gamma-2

Target/Specificity

Recognizes endogenous levels of PLC gamma 2 (pY1217) protein.

Dilution

WB~~WB (1/500 - 1/1000)

Format

Liquid in 0.42% Potassium phosphate, 0.87% Sodium chloride, pH 7.3, 30% glycerol, and 0.09% (W/V) sodium azide.

Storage

Store at -20 °C. Stable for 12 months from date of receipt

Anti-PLC gamma 2 (pY1217) Antibody - Protein Information

Name PLCG2 ([HGNC:9066](#))

Function

The production of the second messenger molecules diacylglycerol (DAG) and inositol 1,4,5-trisphosphate (IP3) is mediated by activated phosphatidylinositol-specific phospholipase C enzymes. It is a crucial enzyme in transmembrane signaling.

Cellular Location

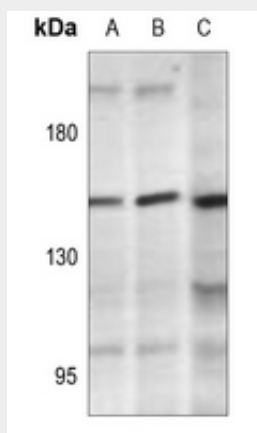
Membrane raft {ECO:0000250|UniProtKB:Q8CIH5}.

Anti-PLC gamma 2 (pY1217) Antibody - Protocols

Provided below are standard protocols that you may find useful for product applications.

- [Western Blot](#)
- [Blocking Peptides](#)
- [Dot Blot](#)
- [Immunohistochemistry](#)
- [Immunofluorescence](#)
- [Immunoprecipitation](#)
- [Flow Cytometry](#)
- [Cell Culture](#)

Anti-PLC gamma 2 (pY1217) Antibody - Images



Western blot analysis of PLC gamma 2 (pY1217) expression in HCT116-EGF (A), Myla2059 (B) whole cell lysates.

Anti-PLC gamma 2 (pY1217) Antibody - Background

KLH-conjugated synthetic peptide encompassing a sequence within the C-term region of human PLC gamma 2. The exact sequence is proprietary.