

**Anti-PHKG1 Antibody**  
**Rabbit polyclonal antibody to PHKG1**  
**Catalog # AP59661****Specification**

---

**Anti-PHKG1 Antibody - Product Information**

Application	<b>WB</b>
Primary Accession	<a href="#">O16816</a>
Other Accession	<a href="#">P07934</a>
Reactivity	<b>Human, Mouse, Rat</b>
Host	<b>Rabbit</b>
Clonality	<b>Polyclonal</b>
Calculated MW	<b>45024</b>

**Anti-PHKG1 Antibody - Additional Information****Gene ID** 5260**Other Names**PHKG; Phosphorylase b kinase gamma catalytic chain, skeletal muscle/heart isoform;  
PHK-gamma-M; Phosphorylase kinase subunit gamma-1; Serine/threonine-protein kinase PHKG1**Target/Specificity**

Recognizes endogenous levels of PHKG1 protein.

**Dilution**

WB~~WB (1/500 - 1/1000)

**Format**

Liquid in 0.42% Potassium phosphate, 0.87% Sodium chloride, pH 7.3, 30% glycerol, and 0.09% (W/V) sodium azide.

**Storage**

Store at -20 °C. Stable for 12 months from date of receipt

**Anti-PHKG1 Antibody - Protein Information****Name** PHKG1**Synonyms** PHKG**Function**

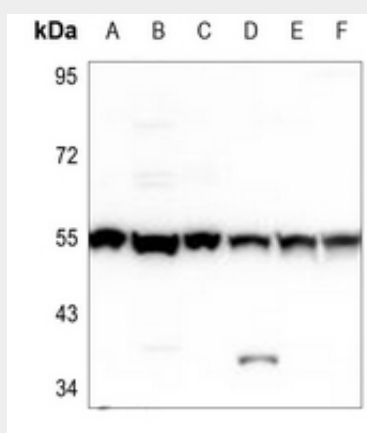
Catalytic subunit of the phosphorylase b kinase (PHK), which mediates the neural and hormonal regulation of glycogen breakdown (glycogenolysis) by phosphorylating and thereby activating glycogen phosphorylase. In vitro, phosphorylates PYGM, TNNI3, MAPT/TAU, GAP43 and NRGN/RC3 (By similarity).

## Anti-PHKG1 Antibody - Protocols

Provided below are standard protocols that you may find useful for product applications.

- [Western Blot](#)
- [Blocking Peptides](#)
- [Dot Blot](#)
- [Immunohistochemistry](#)
- [Immunofluorescence](#)
- [Immunoprecipitation](#)
- [Flow Cytometry](#)
- [Cell Culture](#)

## Anti-PHKG1 Antibody - Images



Western blot analysis of PHKG1 expression in SHSY5Y (A), EC9706 (B), HCT116 (C), H9C2 (D), BV2 (E), rat brain (F) whole cell lysates.

## Anti-PHKG1 Antibody - Background

KLH-conjugated synthetic peptide encompassing a sequence within the center region of human PHKG1. The exact sequence is proprietary.