

Anti-PAI2 Antibody
Rabbit polyclonal antibody to PAI2
Catalog # AP59650

Specification

Anti-PAI2 Antibody - Product Information

Application	WB
Primary Accession	P05120
Reactivity	Human, Mouse, Rat
Host	Rabbit
Clonality	Polyclonal
Calculated MW	46596

Anti-PAI2 Antibody - Additional Information

Gene ID 5055

Other Names

PAI2; PLANH2; Plasminogen activator inhibitor 2; PAI-2; Monocyte Arg-serpin; Placental plasminogen activator inhibitor; Serpin B2; Urokinase inhibitor

Target/Specificity

Recognizes endogenous levels of PAI2 protein.

Dilution

WB~~WB (1/500 - 1/1000)

Format

Liquid in 0.42% Potassium phosphate, 0.87% Sodium chloride, pH 7.3, 30% glycerol, and 0.09% (W/V) sodium azide.

Storage

Store at -20 °C. Stable for 12 months from date of receipt

Anti-PAI2 Antibody - Protein Information

Name SERPINB2

Synonyms PAI2, PLANH2

Function

Inhibits urokinase-type plasminogen activator. The monocyte derived PAI-2 is distinct from the endothelial cell-derived PAI-1.

Cellular Location

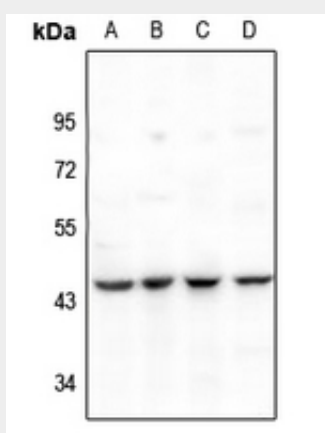
Cytoplasm. Secreted, extracellular space.

Anti-PAI2 Antibody - Protocols

Provided below are standard protocols that you may find useful for product applications.

- [Western Blot](#)
- [Blocking Peptides](#)
- [Dot Blot](#)
- [Immunohistochemistry](#)
- [Immunofluorescence](#)
- [Immunoprecipitation](#)
- [Flow Cytometry](#)
- [Cell Culture](#)

Anti-PAI2 Antibody - Images



Western blot analysis of PAI2 expression in DLD (A), EC9706 (B), 3T3L1 (C), C6 (D) whole cell lysates.

Anti-PAI2 Antibody - Background

KLH-conjugated synthetic peptide encompassing a sequence within the center region of human PAI2. The exact sequence is proprietary.