

**Anti-PAH Antibody**  
Rabbit polyclonal antibody to PAH  
Catalog # AP59649

**Specification**

---

**Anti-PAH Antibody - Product Information**

Application	WB
Primary Accession	<a href="#">P00439</a>
Other Accession	<a href="#">P16331</a>
Reactivity	Human, Mouse, Bovine
Host	Rabbit
Clonality	Polyclonal
Calculated MW	51862

**Anti-PAH Antibody - Additional Information**

**Gene ID** 5053

**Other Names**

Phenylalanine-4-hydroxylase; PAH; Phe-4-monooxygenase

**Target/Specificity**

Recognizes endogenous levels of PAH protein.

**Dilution**

WB~~WB (1/500 - 1/1000)

**Format**

Liquid in 0.42% Potassium phosphate, 0.87% Sodium chloride, pH 7.3, 30% glycerol, and 0.09% (W/V) sodium azide.

**Storage**

Store at -20 °C. Stable for 12 months from date of receipt

**Anti-PAH Antibody - Protein Information**

**Name** PAH

**Function**

Catalyzes the hydroxylation of L-phenylalanine to L-tyrosine.

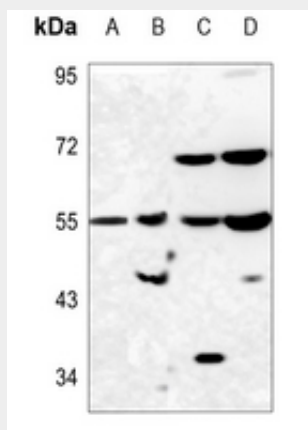
**Anti-PAH Antibody - Protocols**

Provided below are standard protocols that you may find useful for product applications.

- [Western Blot](#)

- [Blocking Peptides](#)
- [Dot Blot](#)
- [Immunohistochemistry](#)
- [Immunofluorescence](#)
- [Immunoprecipitation](#)
- [Flow Cytometry](#)
- [Cell Culture](#)

#### Anti-PAH Antibody - Images



Western blot analysis of PAH expression in U2OS (A), DLD (B), mouse kidney (C), mouse liver (D) whole cell lysates.

#### Anti-PAH Antibody - Background

KLH-conjugated synthetic peptide encompassing a sequence within the C-term region of human PAH. The exact sequence is proprietary.