

Anti-TRK B Antibody
Rabbit polyclonal antibody to TRK B
Catalog # AP59645

Specification

Anti-TRK B Antibody - Product Information

Application	WB, IF
Primary Accession	O16620
Other Accession	P15209
Reactivity	Human, Mouse, Rat, Rabbit, Monkey, Chicken, Bovine, Dog
Host	Rabbit
Clonality	Polyclonal
Calculated MW	91999

Anti-TRK B Antibody - Additional Information

Gene ID 4915

Other Names

TRKB; BDNF/NT-3 growth factors receptor; GP145-TrkB; Trk-B; Neurotrophic tyrosine kinase receptor type 2; TrkB tyrosine kinase; Tropomyosin-related kinase B

Target/Specificity

Recognizes endogenous levels of TRK B protein.

Dilution

WB~~WB (1/500 - 1/1000), IF/IC (1/100 - 1/500)
IF~~WB (1/500 - 1/1000), IF/IC (1/100 - 1/500)

Format

Liquid in 0.42% Potassium phosphate, 0.87% Sodium chloride, pH 7.3, 30% glycerol, and 0.09% (W/V) sodium azide.

Storage

Store at -20 °C. Stable for 12 months from date of receipt

Anti-TRK B Antibody - Protein Information

Name NTRK2

Synonyms TRKB

Function

Receptor tyrosine kinase involved in the development and the maturation of the central and the peripheral nervous systems through regulation of neuron survival, proliferation, migration, differentiation, and synapse formation and plasticity (By similarity). Receptor for BDNF/brain-derived neurotrophic factor and NTF4/neurotrophin-4. Alternatively can also bind

NTF3/neurotrophin-3 which is less efficient in activating the receptor but regulates neuron survival through NTRK2 (PubMed: [15494731](http://www.uniprot.org/citations/15494731), PubMed: [7574684](http://www.uniprot.org/citations/7574684)). Upon ligand-binding, undergoes homodimerization, autophosphorylation and activation (PubMed: [15494731](http://www.uniprot.org/citations/15494731)). Recruits, phosphorylates and/or activates several downstream effectors including SHC1, FRS2, SH2B1, SH2B2 and PLCG1 that regulate distinct overlapping signaling cascades. Through SHC1, FRS2, SH2B1, SH2B2 activates the GRB2-Ras-MAPK cascade that regulates for instance neuronal differentiation including neurite outgrowth. Through the same effectors controls the Ras-PI3 kinase-AKT1 signaling cascade that mainly regulates growth and survival. Through PLCG1 and the downstream protein kinase C-regulated pathways controls synaptic plasticity. Thereby, plays a role in learning and memory by regulating both short term synaptic function and long-term potentiation. PLCG1 also leads to NF-Kappa-B activation and the transcription of genes involved in cell survival. Hence, it is able to suppress anoikis, the apoptosis resulting from loss of cell-matrix interactions. May also play a role in neurotrophin-dependent calcium signaling in glial cells and mediate communication between neurons and glia.

Cellular Location

Cell membrane; Single-pass type I membrane protein. Endosome membrane {ECO:0000250|UniProtKB:P15209}; Single-pass type I membrane protein {ECO:0000250|UniProtKB:P15209}. Early endosome membrane {ECO:0000250|UniProtKB:P15209}. Cell projection, axon {ECO:0000250|UniProtKB:Q63604}. Cell projection, dendrite {ECO:0000250|UniProtKB:Q63604}. Cytoplasm, perinuclear region {ECO:0000250|UniProtKB:Q63604}. Postsynaptic density {ECO:0000250|UniProtKB:P15209}. Note=Internalized to endosomes upon ligand-binding. {ECO:0000250|UniProtKB:P15209}

Tissue Location

Isoform TrkB is expressed in the central and peripheral nervous system. In the central nervous system (CNS), expression is observed in the cerebral cortex, hippocampus, thalamus, choroid plexus, granular layer of the cerebellum, brain stem, and spinal cord. In the peripheral nervous system, it is expressed in many cranial ganglia, the ophthalmic nerve, the vestibular system, multiple facial structures, the submaxillary glands, and dorsal root ganglia. Isoform TrkB-T1 is mainly expressed in the brain but also detected in other tissues including pancreas, kidney and heart. Isoform TrkB-T-Shc is predominantly expressed in the brain.

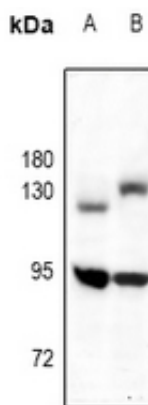
Anti-TRK B Antibody - Protocols

Provided below are standard protocols that you may find useful for product applications.

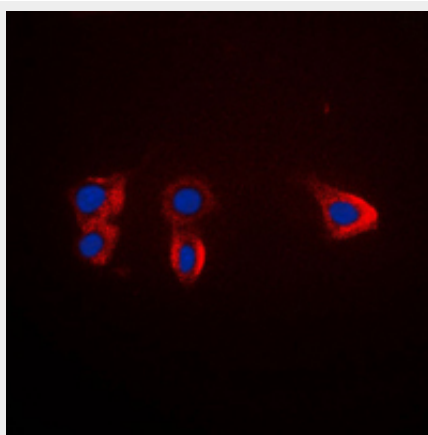
- [Western Blot](#)
- [Blocking Peptides](#)
- [Dot Blot](#)
- [Immunohistochemistry](#)
- [Immunofluorescence](#)
- [Immunoprecipitation](#)
- [Flow Cytometry](#)
- [Cell Culture](#)

Anti-TRK B Antibody - Images





Western blot analysis of TRK B expression in rat heart (A), mouse kidney (B) whole cell lysates.



Immunofluorescent analysis of TRK B staining in HL60 cells. Formalin-fixed cells were permeabilized with 0.1% Triton X-100 in TBS for 5-10 minutes and blocked with 3% BSA-PBS for 30 minutes at room temperature. Cells were probed with the primary antibody in 3% BSA-PBS and incubated overnight at 4 °C in a humidified chamber. Cells were washed with PBST and incubated with a DyLight 594-conjugated secondary antibody (red) in PBS at room temperature in the dark. DAPI was used to stain the cell nuclei (blue).

Anti-TRK B Antibody - Background

KLH-conjugated synthetic peptide encompassing a sequence within the center region of human TRK B. The exact sequence is proprietary.