

Anti-IKB beta (pS23) Antibody
Rabbit polyclonal antibody to IKB beta (pS23)
Catalog # AP59637

Specification

Anti-IKB beta (pS23) Antibody - Product Information

Application	WB, IF
Primary Accession	Q15653
Other Accession	Q60778
Reactivity	Human, Mouse, Rat, Bovine
Host	Rabbit
Clonality	Polyclonal
Calculated MW	37771

Anti-IKB beta (pS23) Antibody - Additional Information

Gene ID 4793

Other Names

IKBB; TRIP9; NF-kappa-B inhibitor beta; NF-kappa-BIB; I-kappa-B-beta; Ikb-B; Ikb-beta; IkappaBbeta; Thyroid receptor-interacting protein 9; TR-interacting protein 9; TRIP-9

Target/Specificity

Recognizes endogenous levels of IKB beta (pS23) protein.

Dilution

WB~~WB (1/500 - 1/1000), IH (1/100 - 1/200), IF/IC (1/100 - 1/500)
IF~~WB (1/500 - 1/1000), IH (1/100 - 1/200), IF/IC (1/100 - 1/500)

Format

Liquid in 0.42% Potassium phosphate, 0.87% Sodium chloride, pH 7.3, 30% glycerol, and 0.09% (W/V) sodium azide.

Storage

Store at -20 °C. Stable for 12 months from date of receipt

Anti-IKB beta (pS23) Antibody - Protein Information

Name NFKBIB

Synonyms IKBB, TRIP9

Function

Inhibits NF-kappa-B by complexing with and trapping it in the cytoplasm. However, the unphosphorylated form resynthesized after cell stimulation is able to bind NF-kappa-B allowing its transport to the nucleus and protecting it to further NFKBIA-dependent inactivation. Association with inhibitor kappa B-interacting NKIRAS1 and NKIRAS2 prevent its phosphorylation rendering it more resistant to degradation, explaining its slower degradation.

Cellular Location

Cytoplasm. Nucleus.

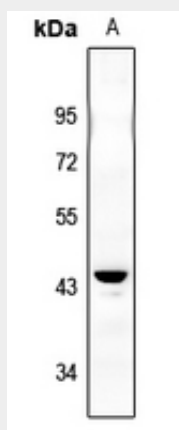
Tissue Location

Expressed in all tissues examined.

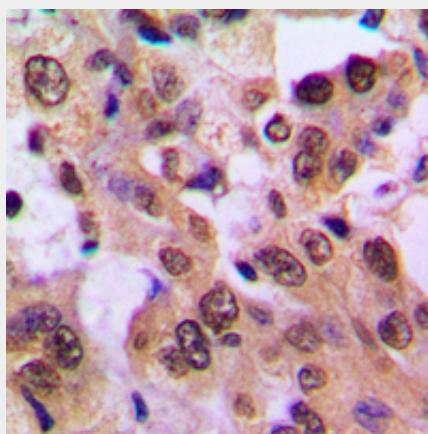
Anti-IKB beta (pS23) Antibody - Protocols

Provided below are standard protocols that you may find useful for product applications.

- [Western Blot](#)
- [Blocking Peptides](#)
- [Dot Blot](#)
- [Immunohistochemistry](#)
- [Immunofluorescence](#)
- [Immunoprecipitation](#)
- [Flow Cytometry](#)
- [Cell Culture](#)

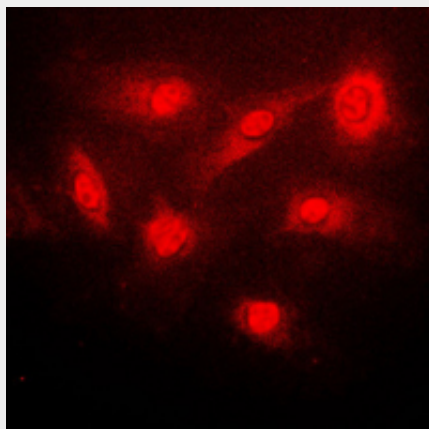
Anti-IKB beta (pS23) Antibody - Images

Western blot analysis of IKB beta (pS23) expression in HuT78 (A) whole cell lysates.



Immunohistochemical analysis of IKB beta (pS23) staining in human breast cancer formalin fixed paraffin embedded tissue section. The section was pre-treated using heat mediated antigen retrieval with sodium citrate buffer (pH 6.0). The section was then incubated with the antibody at

room temperature and detected using an HRP conjugated compact polymer system. DAB was used as the chromogen. The section was then counterstained with haematoxylin and mounted with DPX.



Immunofluorescent analysis of IKB beta (pS23) staining in PC12 cells. Formalin-fixed cells were permeabilized with 0.1% Triton X-100 in TBS for 5-10 minutes and blocked with 3% BSA-PBS for 30 minutes at room temperature. Cells were probed with the primary antibody in 3% BSA-PBS and incubated overnight at 4 °C in a humidified chamber. Cells were washed with PBST and incubated with a DyLight 594-conjugated secondary antibody (red) in PBS at room temperature in the dark.

Anti-IKB beta (pS23) Antibody - Background

KLH-conjugated synthetic peptide encompassing a sequence within the N-term region of human IKB beta. The exact sequence is proprietary.