

Anti-NDUFA8 Antibody
Rabbit polyclonal antibody to NDUFA8
Catalog # AP59632**Specification**

Anti-NDUFA8 Antibody - Product Information

Application	WB
Primary Accession	P51970
Other Accession	Q9DCJ5
Reactivity	Human, Mouse, Rat, Monkey, Bovine
Host	Rabbit
Clonality	Polyclonal
Calculated MW	20105

Anti-NDUFA8 Antibody - Additional Information**Gene ID** 4702**Other Names**

NADH dehydrogenase [ubiquinone] 1 alpha subcomplex subunit 8; Complex I-19kD; CI-19kD; Complex I-PGIV; CI-PGIV; NADH-ubiquinone oxidoreductase 19 kDa subunit

Target/Specificity

Recognizes endogenous levels of NDUFA8 protein.

Dilution

WB~~WB (1/500 - 1/1000), IH (1/100 - 1/200), IP (1/10 - 1/100)

Format

Liquid in 0.42% Potassium phosphate, 0.87% Sodium chloride, pH 7.3, 30% glycerol, and 0.09% (W/V) sodium azide.

Storage

Store at -20 °C. Stable for 12 months from date of receipt

Anti-NDUFA8 Antibody - Protein Information**Name** NDUFA8**Function**Accessory subunit of the mitochondrial membrane respiratory chain NADH dehydrogenase (Complex I), that is believed not to be involved in catalysis (PubMed: [27626371](http://www.uniprot.org/citations/27626371), PubMed: [32385911](http://www.uniprot.org/citations/32385911), PubMed: [33153867](http://www.uniprot.org/citations/33153867)). Complex I functions in the transfer of electrons from NADH to the respiratory chain (PubMed: [27626371](http://www.uniprot.org/citations/27626371)). The immediate electron acceptor for the enzyme is believed to be ubiquinone (PubMed: [27626371](http://www.uniprot.org/citations/27626371)).

href="http://www.uniprot.org/citations/27626371" target="_blank">27626371).

Cellular Location

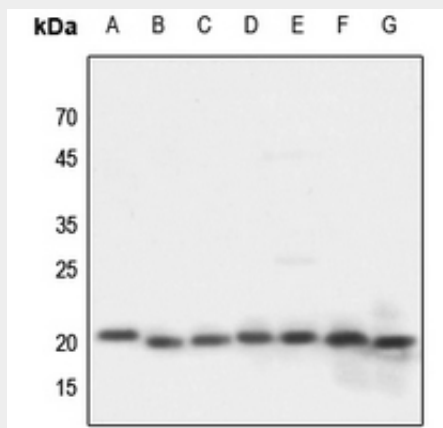
Mitochondrion inner membrane; Peripheral membrane protein. Mitochondrion intermembrane space. Mitochondrion

Anti-NDUFA8 Antibody - Protocols

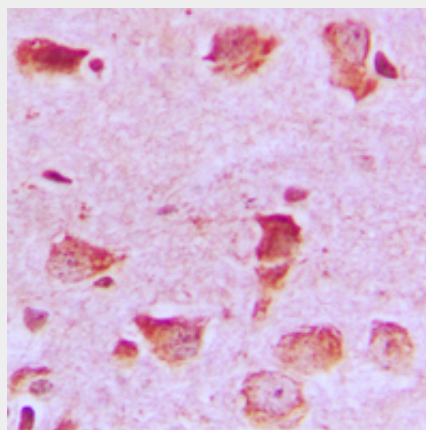
Provided below are standard protocols that you may find useful for product applications.

- [Western Blot](#)
- [Blocking Peptides](#)
- [Dot Blot](#)
- [Immunohistochemistry](#)
- [Immunofluorescence](#)
- [Immunoprecipitation](#)
- [Flow Cytometry](#)
- [Cell Culture](#)

Anti-NDUFA8 Antibody - Images



Western blot analysis of NDUFA8 expression in HEK293T (A), Hela (B), A2780 (C), HepG2 (D), mouse muscle (E), mouse kidney (F), rat kidney (G) whole cell lysates.



Immunohistochemical analysis of NDUFA8 staining in human brain formalin fixed paraffin embedded tissue section. The section was pre-treated using heat mediated antigen retrieval with

sodium citrate buffer (pH 6.0). The section was then incubated with the antibody at room temperature and detected using an HRP conjugated compact polymer system. DAB was used as the chromogen. The section was then counterstained with haematoxylin and mounted with DPX.

Anti-NDUFA8 Antibody - Background

KLH-conjugated synthetic peptide encompassing a sequence within the center region of human NDUFA8. The exact sequence is proprietary.