

**Anti-MMP12 Antibody**  
Rabbit polyclonal antibody to MMP12  
Catalog # AP59624

**Specification**

---

**Anti-MMP12 Antibody - Product Information**

Application	WB
Primary Accession	<a href="#">P39900</a>
Reactivity	Human
Host	Rabbit
Clonality	Polyclonal
Calculated MW	54002

**Anti-MMP12 Antibody - Additional Information**

**Gene ID** 4321

**Other Names**

HME; Macrophage metalloelastase; MME; Macrophage elastase; ME; hME; Matrix metalloproteinase-12; MMP-12

**Target/Specificity**

Recognizes endogenous levels of MMP12 protein.

**Dilution**

WB~~WB (1/500 - 1/1000)

**Format**

Liquid in 0.42% Potassium phosphate, 0.87% Sodium chloride, pH 7.3, 30% glycerol, and 0.09% (W/V) sodium azide.

**Storage**

Store at -20 °C. Stable for 12 months from date of receipt

**Anti-MMP12 Antibody - Protein Information**

**Name** MMP12

**Synonyms** HME

**Function**

May be involved in tissue injury and remodeling. Has significant elastolytic activity. Can accept large and small amino acids at the P1' site, but has a preference for leucine. Aromatic or hydrophobic residues are preferred at the P1 site, with small hydrophobic residues (preferably alanine) occupying P3.

**Cellular Location**

Secreted, extracellular space, extracellular matrix

### Tissue Location

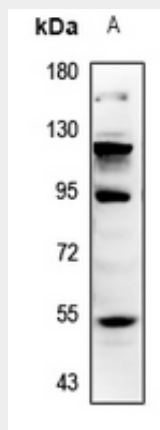
Found in alveolar macrophages but not in peripheral blood monocytes

### Anti-MMP12 Antibody - Protocols

Provided below are standard protocols that you may find useful for product applications.

- [Western Blot](#)
- [Blocking Peptides](#)
- [Dot Blot](#)
- [Immunohistochemistry](#)
- [Immunofluorescence](#)
- [Immunoprecipitation](#)
- [Flow Cytometry](#)
- [Cell Culture](#)

### Anti-MMP12 Antibody - Images



Western blot analysis of MMP12 expression in HEK293T (A) whole cell lysates.

### Anti-MMP12 Antibody - Background

KLH-conjugated synthetic peptide encompassing a sequence within the center region of human MMP12. The exact sequence is proprietary.