

Anti-MAGEA1 Antibody
Rabbit polyclonal antibody to MAGEA1
Catalog # AP59617

Specification

Anti-MAGEA1 Antibody - Product Information

| | |
|-------------------|------------------------|
| Application | WB |
| Primary Accession | P43355 |
| Reactivity | Human, Monkey |
| Host | Rabbit |
| Clonality | Polyclonal |
| Calculated MW | 34342 |

Anti-MAGEA1 Antibody - Additional Information

Gene ID 4100

Other Names

MAGE1; MAGE1A; Melanoma-associated antigen 1; Antigen MZ2-E; Cancer/testis antigen 1.1; CT1.1; MAGE-1 antigen

Target/Specificity

Recognizes endogenous levels of MAGEA1 protein.

Dilution

WB~~WB (1/500 - 1/1000), IH (1/100 - 1/200)

Format

Liquid in 0.42% Potassium phosphate, 0.87% Sodium chloride, pH 7.3, 30% glycerol, and 0.09% (W/V) sodium azide.

Storage

Store at -20 °C. Stable for 12 months from date of receipt

Anti-MAGEA1 Antibody - Protein Information

Name MAGEA1

Synonyms MAGE1, MAGE1A

Function

May be involved in transcriptional regulation through interaction with SNW1 and recruiting histone deactelyase HDAC1. May inhibit notch intracellular domain (NICD) transactivation. May play a role in embryonal development and tumor transformation or aspects of tumor progression. Antigen recognized on a melanoma by autologous cytolytic T-lymphocytes.

Cellular Location

Cytoplasm. Nucleus.

Tissue Location

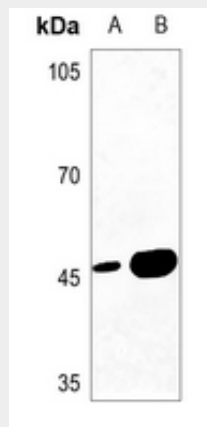
Expressed in many tumors of several types, such as melanoma, head and neck squamous cell carcinoma, lung carcinoma and breast carcinoma, but not in normal tissues except for testes. Never expressed in kidney tumors, leukemias and lymphomas

Anti-MAGEA1 Antibody - Protocols

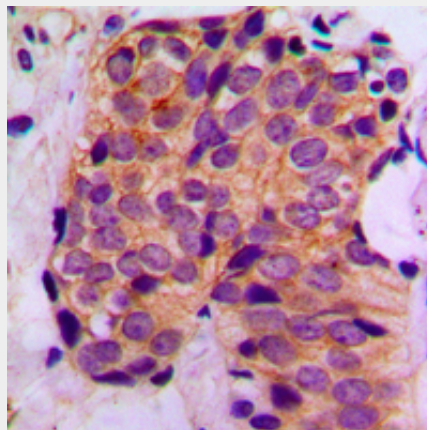
Provided below are standard protocols that you may find useful for product applications.

- [Western Blot](#)
- [Blocking Peptides](#)
- [Dot Blot](#)
- [Immunohistochemistry](#)
- [Immunofluorescence](#)
- [Immunoprecipitation](#)
- [Flow Cytometry](#)
- [Cell Culture](#)

Anti-MAGEA1 Antibody - Images



Western blot analysis of MAGEA1 expression in U2OS (A), A375 (B) whole cell lysates.



Immunohistochemical analysis of MAGEA1 staining in human breast cancer formalin fixed paraffin embedded tissue section. The section was pre-treated using heat mediated antigen retrieval with sodium citrate buffer (pH 6.0). The section was then incubated with the antibody at room temperature and detected using an HRP conjugated compact polymer system. DAB was used as

the chromogen. The section was then counterstained with haematoxylin and mounted with DPX.

Anti-MAGEA1 Antibody - Background

KLH-conjugated synthetic peptide encompassing a sequence within the C-term region of human MAGEA1. The exact sequence is proprietary.