



<http://www.uniprot.org/citations/16951688> target="\_blank">16951688</a>, PubMed:<a href="http://www.uniprot.org/citations/22275001" target="\_blank">22275001</a>, PubMed:<a href="http://www.uniprot.org/citations/30848080" target="\_blank">30848080</a>, PubMed:<a href="http://www.uniprot.org/citations/9436979" target="\_blank">9436979</a>, PubMed:<a href="http://www.uniprot.org/citations/9759503" target="\_blank">9759503</a>). Acts as a mediator of TGF-beta and BMP anti-inflammatory activities. Suppresses IL1R-TLR signaling through its direct interaction with PEL1, preventing NF-kappa-B activation, nuclear transport and NF-kappa-B- mediated expression of pro-inflammatory genes (PubMed:<a href="http://www.uniprot.org/citations/16951688" target="\_blank">16951688</a>). Blocks the BMP-SMAD1 signaling pathway by competing with SMAD4 for receptor- activated SMAD1-binding (PubMed:<a href="http://www.uniprot.org/citations/30848080" target="\_blank">30848080</a>, PubMed:<a href="http://www.uniprot.org/citations/9436979" target="\_blank">9436979</a>). Binds to regulatory elements in target promoter regions (PubMed:<a href="http://www.uniprot.org/citations/16491121" target="\_blank">16491121</a>).

### Cellular Location

Nucleus.

### Tissue Location

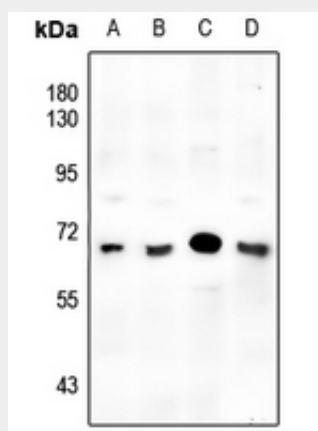
[Isoform B]: Expressed in the brain, heart, ovary, peripheral blood leukocytes, small intestine, spleen, thymus, bone marrow, fetal liver and lymph nodes.

### Anti-SMAD6 Antibody - Protocols

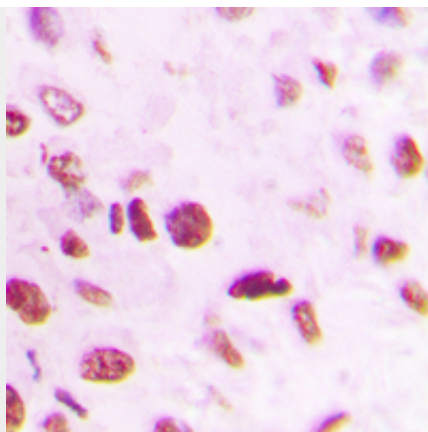
Provided below are standard protocols that you may find useful for product applications.

- [Western Blot](#)
- [Blocking Peptides](#)
- [Dot Blot](#)
- [Immunohistochemistry](#)
- [Immunofluorescence](#)
- [Immunoprecipitation](#)
- [Flow Cytometry](#)
- [Cell Culture](#)

### Anti-SMAD6 Antibody - Images



Western blot analysis of SMAD6 expression in A549 (A), PC3 (B), CT26 (C), H9C2 (D) whole cell lysates.



Immunohistochemical analysis of SMAD6 staining in human lung cancer formalin fixed paraffin embedded tissue section. The section was pre-treated using heat mediated antigen retrieval with sodium citrate buffer (pH 6.0). The section was then incubated with the antibody at room temperature and detected using an HRP conjugated compact polymer system. DAB was used as the chromogen. The section was then counterstained with haematoxylin and mounted with DPX.

#### **Anti-SMAD6 Antibody - Background**

KLH-conjugated synthetic peptide encompassing a sequence within the center region of human SMAD6. The exact sequence is proprietary.