

Anti-MAD2 Antibody
Rabbit polyclonal antibody to MAD2
Catalog # AP59612

Specification

Anti-MAD2 Antibody - Product Information

Application	WB
Primary Accession	O13257
Other Accession	O9Z1B5
Reactivity	Human, Mouse, Rat, Monkey
Host	Rabbit
Clonality	Polyclonal
Calculated MW	23510

Anti-MAD2 Antibody - Additional Information

Gene ID 4085

Other Names

MAD2; Mitotic spindle assembly checkpoint protein MAD2A; HsMAD2; Mitotic arrest deficient 2-like protein 1; MAD2-like protein 1

Target/Specificity

Recognizes endogenous levels of MAD2 protein.

Dilution

WB~~WB (1/500 - 1/1000)

Format

Liquid in 0.42% Potassium phosphate, 0.87% Sodium chloride, pH 7.3, 30% glycerol, and 0.09% (W/V) sodium azide.

Storage

Store at -20 °C. Stable for 12 months from date of receipt

Anti-MAD2 Antibody - Protein Information

Name MAD2L1

Synonyms MAD2

Function

Component of the spindle-assembly checkpoint that prevents the onset of anaphase until all chromosomes are properly aligned at the metaphase plate (PubMed: [15024386](http://www.uniprot.org/citations/15024386), PubMed: [29162720](http://www.uniprot.org/citations/29162720)). In the closed conformation (C-MAD2) forms a heterotetrameric complex with MAD1L1 at unattached kinetochores during prometaphase, the complex recruits open conformation molecules of MAD2L1

(O-MAD2) and then promotes the conversion of O-MAD2 to C-MAD2 (PubMed:29162720). Required for the execution of the mitotic checkpoint which monitors the process of kinetochore-spindle attachment and inhibits the activity of the anaphase promoting complex by sequestering CDC20 until all chromosomes are aligned at the metaphase plate (PubMed:10700282, PubMed:11804586, PubMed:15024386).

Cellular Location

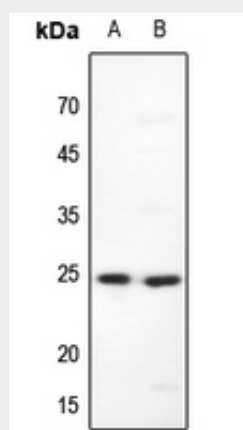
Nucleus. Chromosome, centromere, kinetochore. Cytoplasm. Cytoplasm, cytoskeleton, spindle pole Note=Recruited by MAD1L1 to unattached kinetochores (Probable) Recruited to the nuclear pore complex by TPR during interphase Recruited to kinetochores in late prometaphase after BUB1, CENPF, BUB1B and CENPE. Kinetochore association requires the presence of NEK2 Kinetochore association is repressed by UBD. Sequestered to the cytoplasm upon interaction with isoform 3 of MAD1L1 (PubMed:19010891) {ECO:0000269|PubMed:19010891, ECO:0000305}

Anti-MAD2 Antibody - Protocols

Provided below are standard protocols that you may find useful for product applications.

- [Western Blot](#)
- [Blocking Peptides](#)
- [Dot Blot](#)
- [Immunohistochemistry](#)
- [Immunofluorescence](#)
- [Immunoprecipitation](#)
- [Flow Cytometry](#)
- [Cell Culture](#)

Anti-MAD2 Antibody - Images



Western blot analysis of MAD2 expression in HEK293T (A), HeLa (B) whole cell lysates.

Anti-MAD2 Antibody - Background

KLH-conjugated synthetic peptide encompassing a sequence within the center region of human MAD2. The exact sequence is proprietary.