

**Anti-TNF beta Antibody**  
**Rabbit polyclonal antibody to TNF beta**  
**Catalog # AP59610****Specification**

---

**Anti-TNF beta Antibody - Product Information**

|                   |                          |
|-------------------|--------------------------|
| Application       | <b>WB</b>                |
| Primary Accession | <a href="#">P01374</a>   |
| Reactivity        | <b>Human, Mouse, Rat</b> |
| Host              | <b>Rabbit</b>            |
| Clonality         | <b>Polyclonal</b>        |
| Calculated MW     | <b>22297</b>             |

**Anti-TNF beta Antibody - Additional Information****Gene ID** 4049**Other Names**

TNFB; TNFSF1; Lymphotoxin-alpha; LT-alpha; TNF-beta; Tumor necrosis factor ligand superfamily member 1

**Target/Specificity**

Recognizes endogenous levels of TNF beta protein.

**Dilution**

WB~~WB (1/500 - 1/1000)

**Format**

Liquid in 0.42% Potassium phosphate, 0.87% Sodium chloride, pH 7.3, 30% glycerol, and 0.09% (W/V) sodium azide.

**Storage**

Store at -20 °C. Stable for 12 months from date of receipt

**Anti-TNF beta Antibody - Protein Information****Name** LTA**Synonyms** TNFB, TNFSF1**Function**Cytokine that in its homotrimeric form binds to TNFRSF1A/TNFR1, TNFRSF1B/TNFR2 and TNFRSF14/HVEM (PubMed: [9462508](http://www.uniprot.org/citations/9462508)). In its heterotrimeric form with LTB binds to TNFRSF3/LTBR (PubMed: [24248355](http://www.uniprot.org/citations/24248355)). Lymphotoxin is produced by lymphocytes and is cytotoxic for a wide range of tumor cells in vitro and in vivo.

### Cellular Location

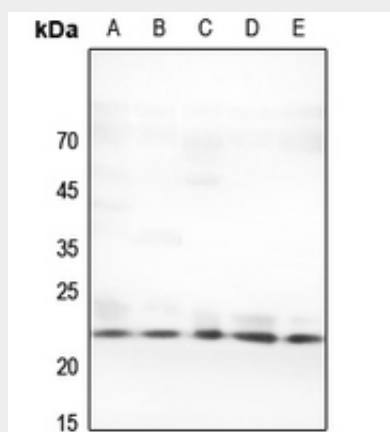
Secreted. Membrane. Note=The homotrimer is secreted. The heterotrimer is membrane-associated

### Anti-TNF beta Antibody - Protocols

Provided below are standard protocols that you may find useful for product applications.

- [Western Blot](#)
- [Blocking Peptides](#)
- [Dot Blot](#)
- [Immunohistochemistry](#)
- [Immunofluorescence](#)
- [Immunoprecipitation](#)
- [Flow Cytometry](#)
- [Cell Culture](#)

### Anti-TNF beta Antibody - Images



Western blot analysis of TNF beta expression in HEK293T (A), Hela (B), mouse testis (C), rat spleen (D), rat testis (E) whole cell lysates.

### Anti-TNF beta Antibody - Background

KLH-conjugated synthetic peptide encompassing a sequence within the center region of human TNF beta. The exact sequence is proprietary.