

**Anti-CD51 Antibody**  
**Rabbit polyclonal antibody to CD51**  
**Catalog # AP59594****Specification**

---

**Anti-CD51 Antibody - Product Information**

Application	<b>WB</b>
Primary Accession	<a href="#">P06756</a>
Reactivity	<b>Human, Pig</b>
Host	<b>Rabbit</b>
Clonality	<b>Polyclonal</b>
Calculated MW	<b>116038</b>

**Anti-CD51 Antibody - Additional Information****Gene ID** 3685**Other Names**

MSK8; VNRA; Integrin alpha-V; Vitronectin receptor subunit alpha; CD51

**Target/Specificity**

Recognizes endogenous levels of CD51 protein.

**Dilution**

WB~~WB (1/500 - 1/1000)

**Format**

Liquid in 0.42% Potassium phosphate, 0.87% Sodium chloride, pH 7.3, 30% glycerol, and 0.09% (W/V) sodium azide.

**Storage**

Store at -20 °C. Stable for 12 months from date of receipt

**Anti-CD51 Antibody - Protein Information****Name** ITGAV ([HGNC:6150](#))**Function**

The alpha-V (ITGAV) integrins are receptors for vitronectin, cytotactin, fibronectin, fibrinogen, laminin, matrix metalloproteinase- 2, osteopontin, osteomodulin, prothrombin, thrombospondin and vWF. They recognize the sequence R-G-D in a wide array of ligands. ITGAV:ITGB3 binds to fractalkine (CX3CL1) and may act as its coreceptor in CX3CR1- dependent fractalkine signaling (PubMed:<a href="http://www.uniprot.org/citations/23125415" target="\_blank">23125415</a>). ITGAV:ITGB3 binds to NRG1 (via EGF domain) and this binding is essential for NRG1-ERBB signaling (PubMed:<a href="http://www.uniprot.org/citations/20682778" target="\_blank">20682778</a>). ITGAV:ITGB3 binds to FGF1 and this binding is essential for FGF1 signaling (PubMed:<a href="http://www.uniprot.org/citations/18441324" target="\_blank">18441324</a>). ITGAV:ITGB3 binds to FGF2 and this binding is essential for

FGF2 signaling (PubMed:<a href="http://www.uniprot.org/citations/28302677" target="\_blank">28302677</a>). ITGAV:ITGB3 binds to IGF1 and this binding is essential for IGF1 signaling (PubMed:<a href="http://www.uniprot.org/citations/19578119" target="\_blank">19578119</a>). ITGAV:ITGB3 binds to IGF2 and this binding is essential for IGF2 signaling (PubMed:<a href="http://www.uniprot.org/citations/28873464" target="\_blank">28873464</a>). ITGAV:ITGB3 binds to IL1B and this binding is essential for IL1B signaling (PubMed:<a href="http://www.uniprot.org/citations/29030430" target="\_blank">29030430</a>). ITGAV:ITGB3 binds to PLA2G2A via a site (site 2) which is distinct from the classical ligand-binding site (site 1) and this induces integrin conformational changes and enhanced ligand binding to site 1 (PubMed:<a href="http://www.uniprot.org/citations/18635536" target="\_blank">18635536</a>, PubMed:<a href="http://www.uniprot.org/citations/25398877" target="\_blank">25398877</a>). ITGAV:ITGB3 and ITGAV:ITGB6 act as receptors for fibrillin-1 (FBN1) and mediate R-G-D-dependent cell adhesion to FBN1 (PubMed:<a href="http://www.uniprot.org/citations/12807887" target="\_blank">12807887</a>, PubMed:<a href="http://www.uniprot.org/citations/17158881" target="\_blank">17158881</a>). Integrin alpha-V/beta-6 or alpha-V/beta-8 (ITGAV:ITGB6 or ITGAV:ITGB8) mediates R-G-D-dependent release of transforming growth factor beta-1 (TGF-beta-1) from regulatory Latency-associated peptide (LAP), thereby playing a key role in TGF-beta-1 activation (PubMed:<a href="http://www.uniprot.org/citations/15184403" target="\_blank">15184403</a>, PubMed:<a href="http://www.uniprot.org/citations/22278742" target="\_blank">22278742</a>, PubMed:<a href="http://www.uniprot.org/citations/28117447" target="\_blank">28117447</a>). ITGAV:ITGB3 acts as a receptor for CD40LG (PubMed:<a href="http://www.uniprot.org/citations/31331973" target="\_blank">31331973</a>). ITGAV:ITGB3 acts as a receptor for IBSP and promotes cell adhesion and migration to IBSP (PubMed:<a href="http://www.uniprot.org/citations/10640428" target="\_blank">10640428</a>).

#### Cellular Location

Cell membrane; Single-pass type I membrane protein. Cell junction, focal adhesion

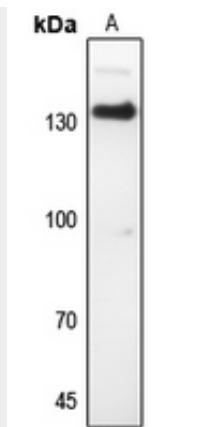
#### Anti-CD51 Antibody - Protocols

Provided below are standard protocols that you may find useful for product applications.

- [Western Blot](#)
- [Blocking Peptides](#)
- [Dot Blot](#)
- [Immunohistochemistry](#)
- [Immunofluorescence](#)
- [Immunoprecipitation](#)
- [Flow Cytometry](#)
- [Cell Culture](#)

#### Anti-CD51 Antibody - Images





Western blot analysis of CD51 expression in HGC27 (A) whole cell lysates.

### **Anti-CD51 Antibody - Background**

KLH-conjugated synthetic peptide encompassing a sequence within the center region of human CD51. The exact sequence is proprietary.