

Anti-CD49c Antibody
Rabbit polyclonal antibody to CD49c
Catalog # AP59593**Specification**

Anti-CD49c Antibody - Product Information

Application	WB
Primary Accession	P26006
Other Accession	Q62470
Reactivity	Human, Mouse, Rat
Host	Rabbit
Clonality	Polyclonal
Calculated MW	116612

Anti-CD49c Antibody - Additional Information**Gene ID** 3675**Other Names**

MSK18; Integrin alpha-3; CD49 antigen-like family member C; FRP-2; Galactoprotein B3; GAPB3; VLA-3 subunit alpha; CD49c

Target/Specificity

Recognizes endogenous levels of CD49c protein.

Dilution

WB~~WB (1/500 - 1/1000)

Format

Liquid in 0.42% Potassium phosphate, 0.87% Sodium chloride, pH 7.3, 30% glycerol, and 0.09% (W/V) sodium azide.

Storage

Store at -20 °C. Stable for 12 months from date of receipt

Anti-CD49c Antibody - Protein Information**Name** ITGA3**Synonyms** MSK18**Function**

Integrin alpha-3/beta-1 is a receptor for fibronectin, laminin, collagen, epiligrin, thrombospondin and CSPG4. Integrin alpha- 3/beta-1 provides a docking site for FAP (seprase) at invadopodia plasma membranes in a collagen-dependent manner and hence may participate in the adhesion, formation of invadopodia and matrix degradation processes, promoting cell invasion. Alpha-3/beta-1 may mediate with LGALS3 the stimulation by CSPG4 of endothelial cells migration.

Cellular Location

Cell membrane; Single-pass type I membrane protein. Cell membrane; Lipid- anchor. Cell projection, invadopodium membrane; Single-pass type I membrane protein. Cell projection, filopodium membrane; Single-pass type I membrane protein. Note=Enriched preferentially at invadopodia, cell membrane protrusions that correspond to sites of cell invasion, in a collagen-dependent manner.

Tissue Location

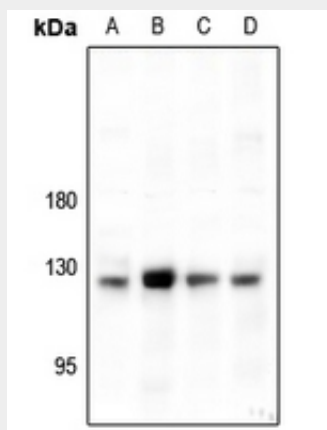
Isoform 1 is widely expressed. Isoform 2 is expressed in brain and heart. In brain, both isoforms are exclusively expressed on vascular smooth muscle cells, whereas in heart isoform 1 is strongly expressed on vascular smooth muscle cells, isoform 2 is detected only on endothelial vein cells.

Anti-CD49c Antibody - Protocols

Provided below are standard protocols that you may find useful for product applications.

- [Western Blot](#)
- [Blocking Peptides](#)
- [Dot Blot](#)
- [Immunohistochemistry](#)
- [Immunofluorescence](#)
- [Immunoprecipitation](#)
- [Flow Cytometry](#)
- [Cell Culture](#)

Anti-CD49c Antibody - Images



Western blot analysis of CD49c expression in HepG2 (A), AML12 (B), PC12 (C), A549 (D) whole cell lysates.

Anti-CD49c Antibody - Background

KLH-conjugated synthetic peptide encompassing a sequence within the center region of human CD49c. The exact sequence is proprietary.