

Anti-IRS1 (pS1101) Antibody
Rabbit polyclonal antibody to IRS1 (pS1101)
Catalog # AP59592

Specification

Anti-IRS1 (pS1101) Antibody - Product Information

| | |
|-------------------|--------------------------------|
| Application | WB |
| Primary Accession | P35568 |
| Other Accession | P35569 |
| Reactivity | Human, Mouse, Rat, Monkey, Pig |
| Host | Rabbit |
| Clonality | Polyclonal |
| Calculated MW | 131591 |

Anti-IRS1 (pS1101) Antibody - Additional Information

Gene ID 3667

Other Names

Insulin receptor substrate 1; IRS-1

Target/Specificity

Recognizes endogenous levels of IRS1 (pS1101) protein.

Dilution

WB~~WB (1/500 - 1/1000), IH (1/100 - 1/200)

Format

Liquid in 0.42% Potassium phosphate, 0.87% Sodium chloride, pH 7.3, 30% glycerol, and 0.09% (W/V) sodium azide.

Storage

Store at -20 °C. Stable for 12 months from date of receipt

Anti-IRS1 (pS1101) Antibody - Protein Information

Name IRS1

Function

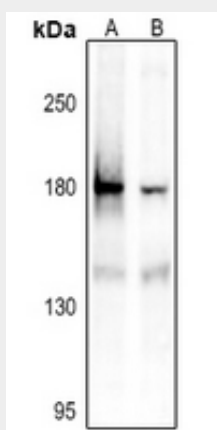
May mediate the control of various cellular processes by insulin. When phosphorylated by the insulin receptor binds specifically to various cellular proteins containing SH2 domains such as phosphatidylinositol 3-kinase p85 subunit or GRB2. Activates phosphatidylinositol 3-kinase when bound to the regulatory p85 subunit (By similarity).

Anti-IRS1 (pS1101) Antibody - Protocols

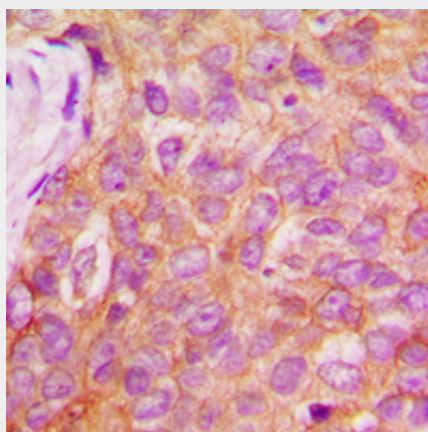
Provided below are standard protocols that you may find useful for product applications.

- [Western Blot](#)
- [Blocking Peptides](#)
- [Dot Blot](#)
- [Immunohistochemistry](#)
- [Immunofluorescence](#)
- [Immunoprecipitation](#)
- [Flow Cytometry](#)
- [Cell Culture](#)

Anti-IRS1 (pS1101) Antibody - Images



Western blot analysis of IRS1 (pS1101) expression in A375 (A), HEK293T (B) whole cell lysates.



Immunohistochemical analysis of IRS1 (pS1101) staining in human breast cancer formalin fixed paraffin embedded tissue section. The section was pre-treated using heat mediated antigen retrieval with sodium citrate buffer (pH 6.0). The section was then incubated with the antibody at room temperature and detected using an HRP conjugated compact polymer system. DAB was used as the chromogen. The section was then counterstained with haematoxylin and mounted with DPX.

Anti-IRS1 (pS1101) Antibody - Background

KLH-conjugated synthetic peptide encompassing a sequence within the C-term region of human IRS1. The exact sequence is proprietary.