

Anti-IL-12B Antibody
Rabbit polyclonal antibody to IL-12B
Catalog # AP59589

Specification

Anti-IL-12B Antibody - Product Information

Application	WB
Primary Accession	P29460
Reactivity	Human
Host	Rabbit
Clonality	Polyclonal
Calculated MW	37169

Anti-IL-12B Antibody - Additional Information

Gene ID 3593

Other Names

NKSF2; Interleukin-12 subunit beta; IL-12B; Cytotoxic lymphocyte maturation factor 40 kDa subunit; CLMF p40; IL-12 subunit p40; NK cell stimulatory factor chain 2; NKSF2

Target/Specificity

Recognizes endogenous levels of IL-12B protein.

Dilution

WB~~WB (1/500 - 1/1000)

Format

Liquid in 0.42% Potassium phosphate, 0.87% Sodium chloride, pH 7.3, 30% glycerol, and 0.09% (W/V) sodium azide.

Storage

Store at -20 °C. Stable for 12 months from date of receipt

Anti-IL-12B Antibody - Protein Information

Name IL12B

Synonyms NKSF2

Function

Cytokine that can act as a growth factor for activated T and NK cells, enhance the lytic activity of NK/lymphokine-activated killer cells, and stimulate the production of IFN-gamma by resting PBMC.

Cellular Location

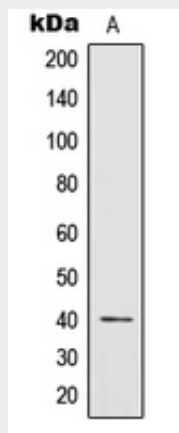
Secreted.

Anti-IL-12B Antibody - Protocols

Provided below are standard protocols that you may find useful for product applications.

- [Western Blot](#)
- [Blocking Peptides](#)
- [Dot Blot](#)
- [Immunohistochemistry](#)
- [Immunofluorescence](#)
- [Immunoprecipitation](#)
- [Flow Cytometry](#)
- [Cell Culture](#)

Anti-IL-12B Antibody - Images



Western blot analysis of IL-12B expression in human brain (A) whole cell lysates.

Anti-IL-12B Antibody - Background

KLH-conjugated synthetic peptide encompassing a sequence within the center region of human IL-12B. The exact sequence is proprietary.