

Anti-IGF1 Receptor Antibody
Rabbit polyclonal antibody to IGF1 Receptor
Catalog # AP59586

Specification

Anti-IGF1 Receptor Antibody - Product Information

Application	WB
Primary Accession	P08069 , P06213
Reactivity	Human, Mouse, Rat, Zebrafish, Chicken, Bovine
Host	Rabbit
Clonality	Polyclonal

Anti-IGF1 Receptor Antibody - Additional Information

Other Names

IGF1R; Insulin-like growth factor 1 receptor; Insulin-like growth factor I receptor; IGF-I receptor; CD221; INSR; Insulin receptor; IR; CD220

Target/Specificity

Recognizes endogenous levels of IGF1 Receptor protein.

Dilution

WB~~WB (1/500 - 1/1000), IH (1/100 - 1/200)

Format

Liquid in 0.42% Potassium phosphate, 0.87% Sodium chloride, pH 7.3, 30% glycerol, and 0.09% (W/V) sodium azide.

Storage

Store at -20 °C. Stable for 12 months from date of receipt

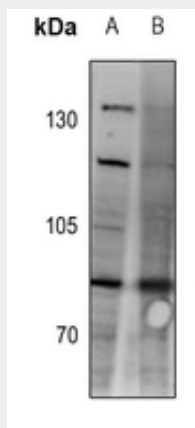
Anti-IGF1 Receptor Antibody - Protein Information

Anti-IGF1 Receptor Antibody - Protocols

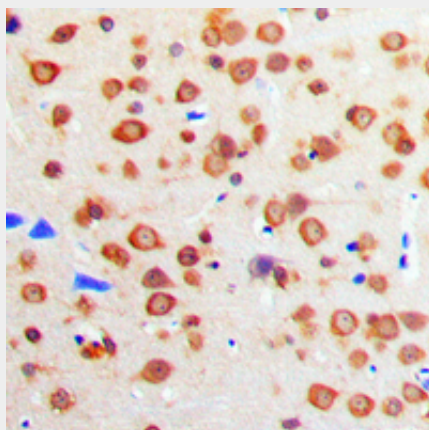
Provided below are standard protocols that you may find useful for product applications.

- [Western Blot](#)
- [Blocking Peptides](#)
- [Dot Blot](#)
- [Immunohistochemistry](#)
- [Immunofluorescence](#)
- [Immunoprecipitation](#)
- [Flow Cytometry](#)
- [Cell Culture](#)

Anti-IGF1 Receptor Antibody - Images



Western blot analysis of IGF1 Receptor expression in HeLa (A), C6 (B), AML12 (C) whole cell lysates.



Immunohistochemical analysis of IGF1 Receptor staining in human brain formalin fixed paraffin embedded tissue section. The section was pre-treated using heat mediated antigen retrieval with sodium citrate buffer (pH 6.0). The section was then incubated with the antibody at room temperature and detected using an HRP conjugated compact polymer system. DAB was used as the chromogen. The section was then counterstained with haematoxylin and mounted with DPX.

Anti-IGF1 Receptor Antibody - Background

KLH-conjugated synthetic peptide encompassing a sequence within the C-term region of human IGF1 Receptor. The exact sequence is proprietary.