

Anti-Histamine H2 Receptor Antibody
Rabbit polyclonal antibody to Histamine H2 Receptor
Catalog # AP59581

Specification

Anti-Histamine H2 Receptor Antibody - Product Information

Application	WB, IF
Primary Accession	P25021
Other Accession	P97292
Reactivity	Human, Mouse, Rat
Host	Rabbit
Clonality	Polyclonal
Calculated MW	40098

Anti-Histamine H2 Receptor Antibody - Additional Information

Gene ID 3274

Other Names

Histamine H2 receptor; H2R; HH2R; Gastric receptor I

Target/Specificity

Recognizes endogenous levels of Histamine H2 Receptor protein.

Dilution

WB~~WB (1/500 - 1/1000), IF/IC (1/100 - 1/500)

IF~~WB (1/500 - 1/1000), IF/IC (1/100 - 1/500)

Format

Liquid in 0.42% Potassium phosphate, 0.87% Sodium chloride, pH 7.3, 30% glycerol, and 0.09% (W/V) sodium azide.

Storage

Store at -20 °C. Stable for 12 months from date of receipt

Anti-Histamine H2 Receptor Antibody - Protein Information

Name HRH2

Function

The H2 subclass of histamine receptors mediates gastric acid secretion. Also appears to regulate gastrointestinal motility and intestinal secretion. Possible role in regulating cell growth and differentiation. The activity of this receptor is mediated by G proteins which activate adenylyl cyclase and, through a separate G protein-dependent mechanism, the phosphoinositide/protein kinase (PKC) signaling pathway (By similarity).

Cellular Location

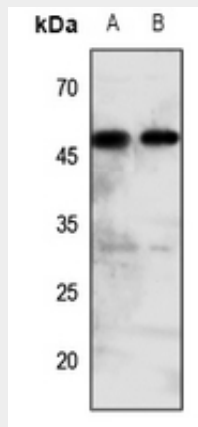
Cell membrane; Multi-pass membrane protein.

Anti-Histamine H2 Receptor Antibody - Protocols

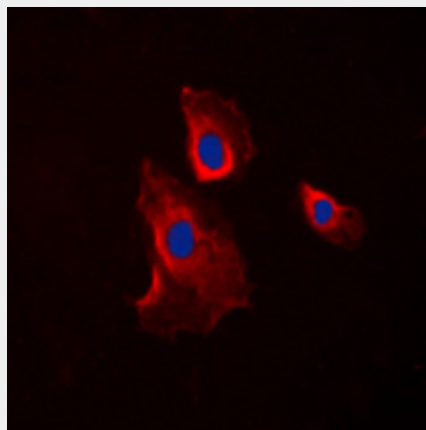
Provided below are standard protocols that you may find useful for product applications.

- [Western Blot](#)
- [Blocking Peptides](#)
- [Dot Blot](#)
- [Immunohistochemistry](#)
- [Immunofluorescence](#)
- [Immunoprecipitation](#)
- [Flow Cytometry](#)
- [Cell Culture](#)

Anti-Histamine H2 Receptor Antibody - Images



Western blot analysis of Histamine H2 Receptor expression in mouse kidney (A), rat liver (B) whole cell lysates.



Immunofluorescent analysis of Histamine H2 Receptor staining in COLO205 cells. Formalin-fixed cells were permeabilized with 0.1% Triton X-100 in TBS for 5-10 minutes and blocked with 3% BSA-PBS for 30 minutes at room temperature. Cells were probed with the primary antibody in 3% BSA-PBS and incubated overnight at 4 °C in a humidified chamber. Cells were washed with PBST and incubated with a DyLight 594-conjugated secondary antibody (red) in PBS at room temperature in the dark. DAPI was used to stain the cell nuclei (blue).

Anti-Histamine H2 Receptor Antibody - Background

KLH-conjugated synthetic peptide encompassing a sequence within the center region of human Histamine H2 Receptor. The exact sequence is proprietary.