

Anti-GTF2E2 Antibody
Rabbit polyclonal antibody to GTF2E2
Catalog # AP59574

Specification

Anti-GTF2E2 Antibody - Product Information

Application	WB
Primary Accession	P29084
Other Accession	O9D902
Reactivity	Human, Mouse, Rat, Bovine
Host	Rabbit
Clonality	Polyclonal
Calculated MW	33044

Anti-GTF2E2 Antibody - Additional Information

Gene ID 2961

Other Names

TF2E2; Transcription initiation factor IIE subunit beta; TFIIE-beta; General transcription factor IIE subunit 2

Target/Specificity

Recognizes endogenous levels of GTF2E2 protein.

Dilution

WB~~WB (1/500 - 1/1000)

Format

Liquid in 0.42% Potassium phosphate, 0.87% Sodium chloride, pH 7.3, 30% glycerol, and 0.09% (W/V) sodium azide.

Storage

Store at -20 °C. Stable for 12 months from date of receipt

Anti-GTF2E2 Antibody - Protein Information

Name GTF2E2

Synonyms TF2E2

Function

Recruits TFIIF to the initiation complex and stimulates the RNA polymerase II C-terminal domain kinase and DNA-dependent ATPase activities of TFIIF. Both TFIIF and TFIIE are required for promoter clearance by RNA polymerase.

Cellular Location

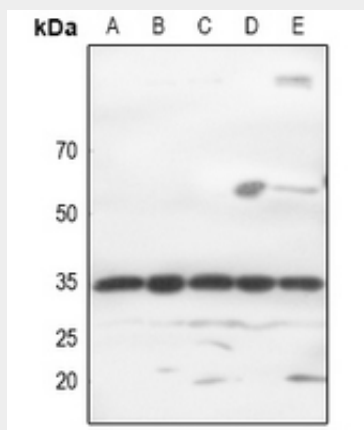
Nucleus.

Anti-GTF2E2 Antibody - Protocols

Provided below are standard protocols that you may find useful for product applications.

- [Western Blot](#)
- [Blocking Peptides](#)
- [Dot Blot](#)
- [Immunohistochemistry](#)
- [Immunofluorescence](#)
- [Immunoprecipitation](#)
- [Flow Cytometry](#)
- [Cell Culture](#)

Anti-GTF2E2 Antibody - Images



Western blot analysis of GTF2E2 expression in HEK293T (A), HeLa (B), mouse brain (C), mouse heart (D), mouse kidney (E) whole cell lysates.

Anti-GTF2E2 Antibody - Background

KLH-conjugated synthetic peptide encompassing a sequence within the center region of human GTF2E2. The exact sequence is proprietary.