

Anti-GCLC Antibody
Rabbit polyclonal antibody to GCLC
Catalog # AP59565

Specification

Anti-GCLC Antibody - Product Information

Application	WB
Primary Accession	P48506
Other Accession	P97494
Reactivity	Human, Mouse, Rat, Zebrafish, Bovine
Host	Rabbit
Clonality	Polyclonal
Calculated MW	72766

Anti-GCLC Antibody - Additional Information

Gene ID 2729

Other Names

GLCL; GLCLC; Glutamate--cysteine ligase catalytic subunit; GCS heavy chain; Gamma-ECS; Gamma-glutamylcysteine synthetase

Target/Specificity

Recognizes endogenous levels of GCLC protein.

Dilution

WB~~WB (1/500 - 1/1000)

Format

Liquid in 0.42% Potassium phosphate, 0.87% Sodium chloride, pH 7.3, 30% glycerol, and 0.09% (W/V) sodium azide.

Storage

Store at -20 °C. Stable for 12 months from date of receipt

Anti-GCLC Antibody - Protein Information

Name GCLC ([HGNC:4311](#))

Synonyms GLCL, GLCLC

Function

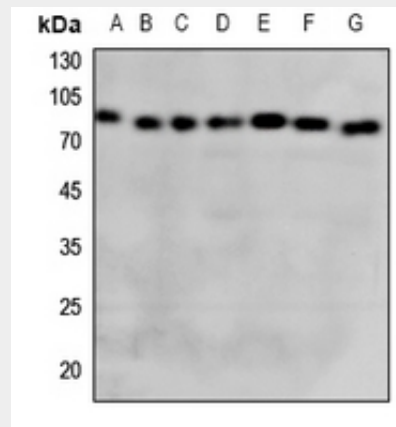
Catalyzes the ATP-dependent ligation of L-glutamate and L- cysteine and participates in the first and rate-limiting step in glutathione biosynthesis.

Anti-GCLC Antibody - Protocols

Provided below are standard protocols that you may find useful for product applications.

- [Western Blot](#)
- [Blocking Peptides](#)
- [Dot Blot](#)
- [Immunohistochemistry](#)
- [Immunofluorescence](#)
- [Immunoprecipitation](#)
- [Flow Cytometry](#)
- [Cell Culture](#)

Anti-GCLC Antibody - Images



Western blot analysis of GCLC expression in HEK293T (A), Hela (B), H460 (C), mouse lung (D), mouse liver (E), mouse kidney (F), rat liver (G) whole cell lysates.

Anti-GCLC Antibody - Background

KLH-conjugated synthetic peptide encompassing a sequence within the center region of human GCLC. The exact sequence is proprietary.