

**Anti-GDF9 Antibody**  
Rabbit polyclonal antibody to GDF9  
Catalog # AP59564

## Specification

---

### Anti-GDF9 Antibody - Product Information

|                   |                        |
|-------------------|------------------------|
| Application       | WB                     |
| Primary Accession | <a href="#">O60383</a> |
| Reactivity        | Human                  |
| Host              | Rabbit                 |
| Clonality         | Polyclonal             |
| Calculated MW     | 51444                  |

### Anti-GDF9 Antibody - Additional Information

**Gene ID** 2661

#### Other Names

Growth/differentiation factor 9; GDF-9

#### Target/Specificity

Recognizes endogenous levels of GDF9 protein.

#### Dilution

WB~~WB (1/500 - 1/1000), IH (1/100 - 1/200)

#### Format

Liquid in 0.42% Potassium phosphate, 0.87% Sodium chloride, pH 7.3, 30% glycerol, and 0.09% (W/V) sodium azide.

#### Storage

Store at -20 °C. Stable for 12 months from date of receipt

### Anti-GDF9 Antibody - Protein Information

**Name** GDF9

#### Function

Required for ovarian folliculogenesis. Promotes primordial follicle development. Stimulates granulosa cell proliferation. Promotes cell transition from G0/G1 to S and G2/M phases, through an increase of CCND1 and CCNE1 expression, and RB1 phosphorylation. It regulates STAR expression and cAMP-dependent progesterone release in granulosa and thecal cells. Attenuates the suppressive effects of activin A on STAR expression and progesterone production by increasing the expression of inhibin B. It suppresses FST and FSTL3 production in granulosa-lutein cells.

#### Cellular Location

Secreted.

### Tissue Location

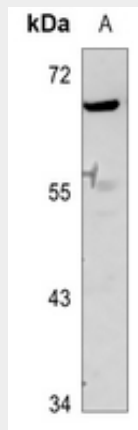
Expressed in ovarian granulosa cells. Present in oocytes of primary follicles (at protein level)

### Anti-GDF9 Antibody - Protocols

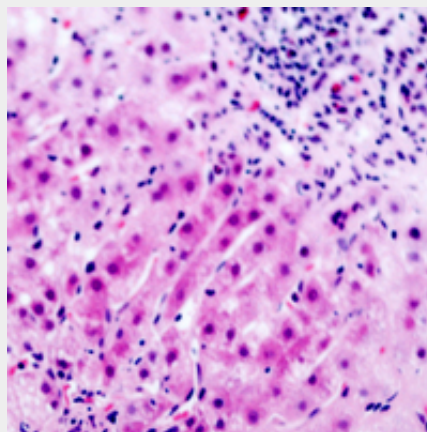
Provided below are standard protocols that you may find useful for product applications.

- [Western Blot](#)
- [Blocking Peptides](#)
- [Dot Blot](#)
- [Immunohistochemistry](#)
- [Immunofluorescence](#)
- [Immunoprecipitation](#)
- [Flow Cytometry](#)
- [Cell Culture](#)

### Anti-GDF9 Antibody - Images



Western blot analysis of GDF9 expression in HEK293T (A), A2780 (B) whole cell lysates.



Immunohistochemical analysis of GDF9 staining in human liver cancer formalin fixed paraffin embedded tissue section. The section was pre-treated using heat mediated antigen retrieval with sodium citrate buffer (pH 6.0). The section was then incubated with the antibody at room temperature and detected using an HRP conjugated compact polymer system. AEC was used as the chromogen. The section was then counterstained with haematoxylin and mounted with DPX.

### Anti-GDF9 Antibody - Background

KLH-conjugated synthetic peptide encompassing a sequence within the center region of human GDF9. The exact sequence is proprietary.