

**Anti-Galactose Kinase Antibody**  
Rabbit polyclonal antibody to Galactose Kinase  
Catalog # AP59563

## Specification

---

### Anti-Galactose Kinase Antibody - Product Information

Application	WB, IF
Primary Accession	<a href="#">P51570</a>
Other Accession	<a href="#">O9R0N0</a>
Reactivity	Human, Mouse, Rat, Dog
Host	Rabbit
Clonality	Polyclonal
Calculated MW	42272

### Anti-Galactose Kinase Antibody - Additional Information

Gene ID 2584

#### Other Names

GALK; Galactokinase; Galactose kinase

#### Target/Specificity

Recognizes endogenous levels of Galactose Kinase protein.

#### Dilution

WB~~WB (1/500 - 1/1000), IF/IC (1/100 - 1/500)

IF~~WB (1/500 - 1/1000), IF/IC (1/100 - 1/500)

#### Format

Liquid in 0.42% Potassium phosphate, 0.87% Sodium chloride, pH 7.3, 30% glycerol, and 0.09% (W/V) sodium azide.

#### Storage

Store at -20 °C. Stable for 12 months from date of receipt

### Anti-Galactose Kinase Antibody - Protein Information

Name GALK1 ([HGNC:4118](#))

Synonyms GALK

#### Function

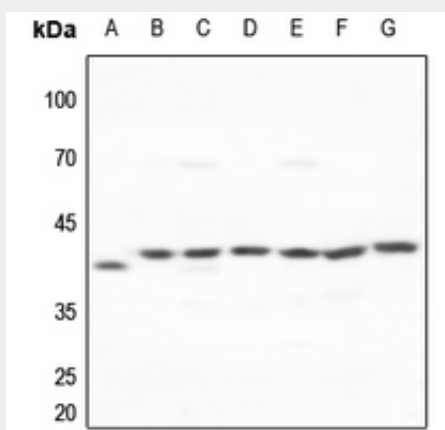
Catalyzes the transfer of a phosphate from ATP to alpha-D- galactose and participates in the first committed step in the catabolism of galactose.

### Anti-Galactose Kinase Antibody - Protocols

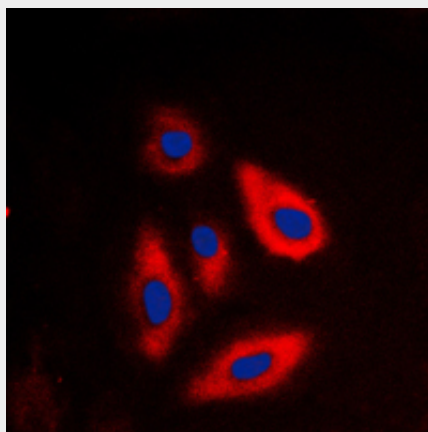
Provided below are standard protocols that you may find useful for product applications.

- [Western Blot](#)
- [Blocking Peptides](#)
- [Dot Blot](#)
- [Immunohistochemistry](#)
- [Immunofluorescence](#)
- [Immunoprecipitation](#)
- [Flow Cytometry](#)
- [Cell Culture](#)

#### Anti-Galactose Kinase Antibody - Images



Western blot analysis of Galactose Kinase expression in HEK293T (A), Hela (B), mouse lung (C), mouse liver (D), mouse kidney (E), rat liver (F), rat kidney (G) whole cell lysates.



Immunofluorescent analysis of Galactose Kinase staining in HepG2 cells. Formalin-fixed cells were permeabilized with 0.1% Triton X-100 in TBS for 5-10 minutes and blocked with 3% BSA-PBS for 30 minutes at room temperature. Cells were probed with the primary antibody in 3% BSA-PBS and incubated overnight at 4 °C in a humidified chamber. Cells were washed with PBST and incubated with a DyLight 594-conjugated secondary antibody (red) in PBS at room temperature in the dark. DAPI was used to stain the cell nuclei (blue).

#### Anti-Galactose Kinase Antibody - Background

KLH-conjugated synthetic peptide encompassing a sequence within the N-term region of human Galactose Kinase. The exact sequence is proprietary.