

Anti-FR alpha Antibody
Rabbit polyclonal antibody to FR alpha
Catalog # AP59557

Specification

Anti-FR alpha Antibody - Product Information

| | |
|-------------------|---------------------------|
| Application | WB |
| Primary Accession | P15328 |
| Reactivity | Human, Mouse, Rat, Monkey |
| Host | Rabbit |
| Clonality | Polyclonal |
| Calculated MW | 29819 |

Anti-FR alpha Antibody - Additional Information

Gene ID 2348

Other Names

FOLR; Folate receptor alpha; FR-alpha; Adult folate-binding protein; FBP; Folate receptor 1; Folate receptor, adult; KB cells FBP; Ovarian tumor-associated antigen MOv18

Target/Specificity

Recognizes endogenous levels of FR alpha protein.

Dilution

WB~~WB (1/500 - 1/1000), IP (1/10 - 1/100)

Format

Liquid in 0.42% Potassium phosphate, 0.87% Sodium chloride, pH 7.3, 30% glycerol, and 0.09% (W/V) sodium azide.

Storage

Store at -20 °C. Stable for 12 months from date of receipt

Anti-FR alpha Antibody - Protein Information

Name FOLR1

Synonyms FOLR

Function

Binds to folate and reduced folic acid derivatives and mediates delivery of 5-methyltetrahydrofolate and folate analogs into the interior of cells (PubMed:19074442, PubMed:23851396, PubMed:23934049, PubMed:2527252, PubMed:8033114, PubMed:<a

[8567728](http://www.uniprot.org/citations/8567728)). Has high affinity for folate and folic acid analogs at neutral pH (PubMed:[23851396](http://www.uniprot.org/citations/23851396), PubMed:[23934049](http://www.uniprot.org/citations/23934049), PubMed:[2527252](http://www.uniprot.org/citations/2527252), PubMed:[8033114](http://www.uniprot.org/citations/8033114), PubMed:[8567728](http://www.uniprot.org/citations/8567728)). Exposure to slightly acidic pH after receptor endocytosis triggers a conformation change that strongly reduces its affinity for folates and mediates their release (PubMed:[8567728](http://www.uniprot.org/citations/8567728)). Required for normal embryonic development and normal cell proliferation (By similarity).

Cellular Location

Cell membrane; Lipid-anchor, GPI-anchor Apical cell membrane; Lipid-anchor, GPI- anchor Basolateral cell membrane; Lipid-anchor, GPI-like-anchor. Secreted Cytoplasmic vesicle. Cytoplasmic vesicle, clathrin-coated vesicle. Endosome. Note=Endocytosed into cytoplasmic vesicles and then recycled to the cell membrane

Tissue Location

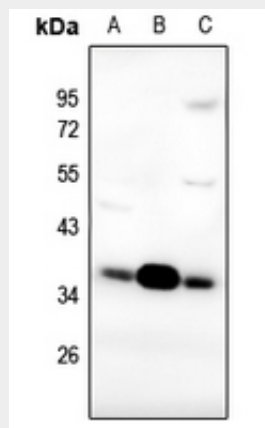
Primarily expressed in tissues of epithelial origin. Expression is increased in malignant tissues. Expressed in kidney, lung and cerebellum. Detected in placenta and thymus epithelium.

Anti-FR alpha Antibody - Protocols

Provided below are standard protocols that you may find useful for product applications.

- [Western Blot](#)
- [Blocking Peptides](#)
- [Dot Blot](#)
- [Immunohistochemistry](#)
- [Immunofluorescence](#)
- [Immunoprecipitation](#)
- [Flow Cytometry](#)
- [Cell Culture](#)

Anti-FR alpha Antibody - Images



Western blot analysis of FR alpha expression in AML12 (A), PC12 (B), HepG2 (C) whole cell lysates.

Anti-FR alpha Antibody - Background

KLH-conjugated synthetic peptide encompassing a sequence within the center region of human FR alpha. The exact sequence is proprietary.