

Anti-Factor II APII Antibody
Rabbit polyclonal antibody to Factor II APII
Catalog # AP59548**Specification**

Anti-Factor II APII Antibody - Product Information

Application	WB
Primary Accession	P00734
Other Accession	P19221
Reactivity	Human, Mouse, Rat
Host	Rabbit
Clonality	Polyclonal
Calculated MW	70037

Anti-Factor II APII Antibody - Additional Information**Gene ID** 2147**Other Names**

Prothrombin; Coagulation factor II

Target/Specificity

Recognizes endogenous levels of Factor II APII protein.

Dilution

WB~~WB (1/500 - 1/1000)

Format

Liquid in 0.42% Potassium phosphate, 0.87% Sodium chloride, pH 7.3, 30% glycerol, and 0.09% (W/V) sodium azide.

Storage

Store at -20 °C. Stable for 12 months from date of receipt

Anti-Factor II APII Antibody - Protein Information**Name** F2**Function**

Thrombin, which cleaves bonds after Arg and Lys, converts fibrinogen to fibrin and activates factors V, VII, VIII, XIII, and, in complex with thrombomodulin, protein C. Functions in blood homeostasis, inflammation and wound healing. Activates coagulation factor XI (F11); activation is promoted by the contact with negatively charged surfaces (PubMed: [2019570](http://www.uniprot.org/citations/2019570), PubMed: [21976677](http://www.uniprot.org/citations/21976677)). Triggers the production of pro-inflammatory cytokines, such as MCP-1/CCL2 and IL8/CXCL8, in endothelial cells (PubMed: [30568593](http://www.uniprot.org/citations/30568593), PubMed: [9780208](http://www.uniprot.org/citations/9780208)).

Cellular Location

Secreted, extracellular space.

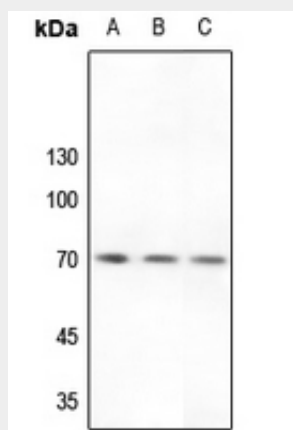
Tissue Location

Expressed by the liver and secreted in plasma.

Anti-Factor II APII Antibody - Protocols

Provided below are standard protocols that you may find useful for product applications.

- [Western Blot](#)
- [Blocking Peptides](#)
- [Dot Blot](#)
- [Immunohistochemistry](#)
- [Immunofluorescence](#)
- [Immunoprecipitation](#)
- [Flow Cytometry](#)
- [Cell Culture](#)

Anti-Factor II APII Antibody - Images

Western blot analysis of Factor II APII expression in HEK293T (A), Hela (B), rat liver (C) whole cell lysates.

Anti-Factor II APII Antibody - Background

KLH-conjugated synthetic peptide encompassing a sequence within the center region of human Factor II APII. The exact sequence is proprietary.