

Anti-Cathepsin V Antibody
Rabbit polyclonal antibody to Cathepsin V
Catalog # AP59529

Specification

Anti-Cathepsin V Antibody - Product Information

Application	WB
Primary Accession	O60911
Reactivity	Human, Mouse, Rat, Monkey
Host	Rabbit
Clonality	Polyclonal
Calculated MW	37329

Anti-Cathepsin V Antibody - Additional Information

Gene ID 1515

Other Names

CATL2; CTSL2; CTSU; Cathepsin L2; Cathepsin U; Cathepsin V

Target/Specificity

Recognizes endogenous levels of Cathepsin V protein.

Dilution

WB~~WB (1/500 - 1/1000)

Format

Liquid in 0.42% Potassium phosphate, 0.87% Sodium chloride, pH 7.3, 30% glycerol, and 0.09% (W/V) sodium azide.

Storage

Store at -20 °C. Stable for 12 months from date of receipt

Anti-Cathepsin V Antibody - Protein Information

Name CTSV

Synonyms CATL2, CTSL2, CTSU

Function

Cysteine protease. May have an important role in corneal physiology.

Cellular Location

Lysosome.

Tissue Location

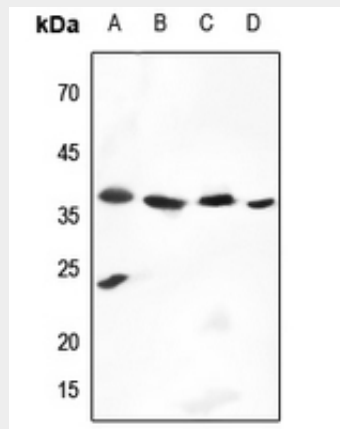
Predominantly expressed in the thymus and testis. Also expressed in corneal epithelium, and to a lesser extent in conjunctival epithelium and skin.

Anti-Cathepsin V Antibody - Protocols

Provided below are standard protocols that you may find useful for product applications.

- [Western Blot](#)
- [Blocking Peptides](#)
- [Dot Blot](#)
- [Immunohistochemistry](#)
- [Immunofluorescence](#)
- [Immunoprecipitation](#)
- [Flow Cytometry](#)
- [Cell Culture](#)

Anti-Cathepsin V Antibody - Images



Western blot analysis of Cathepsin V expression in mouse lung (A), mouse testis (B), rat lung (C), rat testis (D) whole cell lysates.

Anti-Cathepsin V Antibody - Background

KLH-conjugated synthetic peptide encompassing a sequence within the center region of human Cathepsin V. The exact sequence is proprietary.