

Anti-COMT Antibody
Rabbit polyclonal antibody to COMT
Catalog # AP59521**Specification**

Anti-COMT Antibody - Product Information

Application	WB, IF
Primary Accession	P21964
Other Accession	O88587
Reactivity	Human, Mouse, Rat, Monkey
Host	Rabbit
Clonality	Polyclonal
Calculated MW	30037

Anti-COMT Antibody - Additional Information**Gene ID** 1312**Other Names**

Catechol O-methyltransferase

Target/Specificity

Recognizes endogenous levels of COMT protein.

Dilution

WB~~WB (1/500 - 1/1000), IF/IC (1/100 - 1/500)

IF~~WB (1/500 - 1/1000), IF/IC (1/100 - 1/500)

Format

Liquid in 0.42% Potassium phosphate, 0.87% Sodium chloride, pH 7.3, 30% glycerol, and 0.09% (W/V) sodium azide.

Storage

Store at -20 °C. Stable for 12 months from date of receipt

Anti-COMT Antibody - Protein Information**Name** COMT ([HGNC:2228](#))**Function**

Catalyzes the O-methylation, and thereby the inactivation, of catecholamine neurotransmitters and catechol hormones. Also shortens the biological half-lives of certain neuroactive drugs, like L-DOPA, alpha-methyl DOPA and isoproterenol.

Cellular Location

[Isoform Soluble]: Cytoplasm

Tissue Location

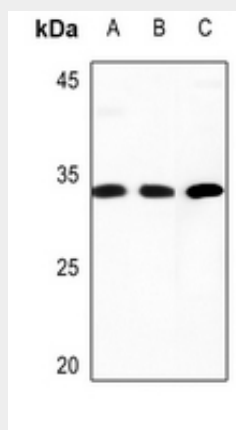
Brain, liver, placenta, lymphocytes and erythrocytes

Anti-COMT Antibody - Protocols

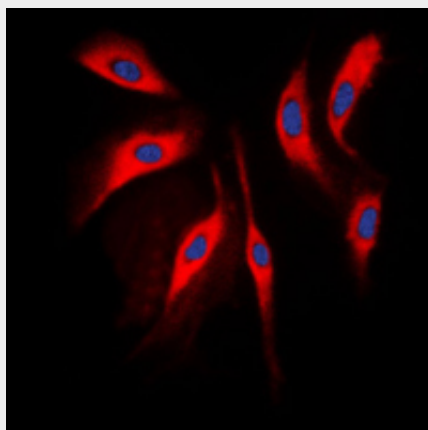
Provided below are standard protocols that you may find useful for product applications.

- [Western Blot](#)
- [Blocking Peptides](#)
- [Dot Blot](#)
- [Immunohistochemistry](#)
- [Immunofluorescence](#)
- [Immunoprecipitation](#)
- [Flow Cytometry](#)
- [Cell Culture](#)

Anti-COMT Antibody - Images



Western blot analysis of COMT expression in A549 (A), U2OS (B), rat testis (C) whole cell lysates.



Immunofluorescent analysis of COMT staining in Raw264.7 cells. Formalin-fixed cells were permeabilized with 0.1% Triton X-100 in TBS for 5-10 minutes and blocked with 3% BSA-PBS for 30 minutes at room temperature. Cells were probed with the primary antibody in 3% BSA-PBS and incubated overnight at 4 °C in a humidified chamber. Cells were washed with PBST and incubated with a DyLight 594-conjugated secondary antibody (red) in PBS at room temperature in the dark. DAPI was used to stain the cell nuclei (blue).

Anti-COMT Antibody - Background

KLH-conjugated synthetic peptide encompassing a sequence within the center region of human COMT. The exact sequence is proprietary.