

**Anti-CDC20 Antibody**  
Rabbit polyclonal antibody to CDC20  
Catalog # AP59505

**Specification**

---

**Anti-CDC20 Antibody - Product Information**

Application	WB
Primary Accession	<a href="#">Q12834</a>
Reactivity	Human, Mouse, Rat, Monkey, Pig
Host	Rabbit
Clonality	Polyclonal
Calculated MW	54723

**Anti-CDC20 Antibody - Additional Information**

Gene ID 991

**Other Names**

Cell division cycle protein 20 homolog; p55CDC

**Target/Specificity**

Recognizes endogenous levels of CDC20 protein.

**Dilution**

WB~~WB (1/500 - 1/1000), IH (1/100 - 1/200)

**Format**

Liquid in 0.42% Potassium phosphate, 0.87% Sodium chloride, pH 7.3, 30% glycerol, and 0.09% (W/V) sodium azide.

**Storage**

Store at -20 °C. Stable for 12 months from date of receipt

**Anti-CDC20 Antibody - Protein Information**

Name CDC20

**Function**

Involved in the metaphase/anaphase transition of cell cycle (PubMed:[32666501](http://www.uniprot.org/citations/32666501)). Required for full ubiquitin ligase activity of the anaphase promoting complex/cyclosome (APC/C) and confers substrate specificity upon the complex (PubMed:[27030811](http://www.uniprot.org/citations/27030811)). Is regulated by MAD2L1: in metaphase the MAD2L1-CDC20-APC/C ternary complex is inactive and in anaphase the CDC20-APC/C binary complex is active in degrading substrates. The CDC20-APC/C complex positively regulates the formation of synaptic vesicle clustering at active zone to the presynaptic membrane in postmitotic neurons. CDC20-APC/C-induced degradation of NEUROD2 induces presynaptic differentiation. The CDC20-APC/C complex promotes proper dilation formation and

radial migration by degrading CCDC41 (By similarity).

#### Cellular Location

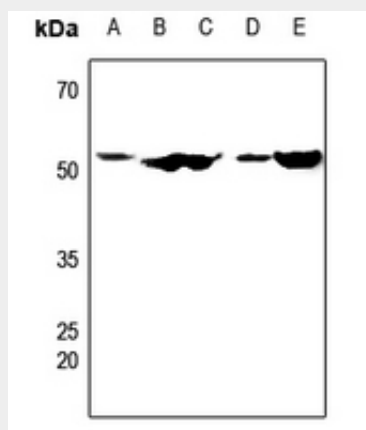
Cytoplasm, cytoskeleton, microtubule organizing center, centrosome. Chromosome, centromere, kinetochore. Cytoplasm, cytoskeleton, spindle pole

#### Anti-CDC20 Antibody - Protocols

Provided below are standard protocols that you may find useful for product applications.

- [Western Blot](#)
- [Blocking Peptides](#)
- [Dot Blot](#)
- [Immunohistochemistry](#)
- [Immunofluorescence](#)
- [Immunoprecipitation](#)
- [Flow Cytometry](#)
- [Cell Culture](#)

#### Anti-CDC20 Antibody - Images



Western blot analysis of CDC20 expression in Hela (A), DLD (B), LOVO (C), mouse spleen (D), rat spleen (E) whole cell lysates.

#### Anti-CDC20 Antibody - Background

KLH-conjugated synthetic peptide encompassing a sequence within the center region of human CDC20. The exact sequence is proprietary.